

Our products are designed to be used correctly and with care for the purpose for which they are intended. No liability is accepted by the Tool Connection for incorrect use of any of our products, and the Tool Connection cannot be held responsible for any damage to personnel, property or equipment when using the tools. Incorrect use will also invalidate the warranty.

If applicable, the applications database and any instructional information provided has been designed to offer general guidance for a particular tool's use and while all attention is given to the accuracy of the data no project should be attempted without referring first to the manufacturer's technical documentation (workshop or instruction manual) or the use of a recognised authority such as Autodata.

It is our policy to continually improve our products and thus we reserve the right to alter specifications and components without prior notice. It is the responsibility of the user to ensure the suitability of the tools and information prior to their use.

7 March 2017 10:02 AM

Guarantee

If this product fails through faulty materials or workmanship, contact our service department direct on: **+44 (0) 1926 818186**. Normal wear and tear are excluded as are consumable items and abuse.



Distributed by The Tool Connection Ltd

Kineton Road, Southam, Warwickshire CV47 0DR
T +44 (0) 1926 815000 F +44 (0) 1926 815888
info@toolconnection.co.uk www.toolconnection.co.uk

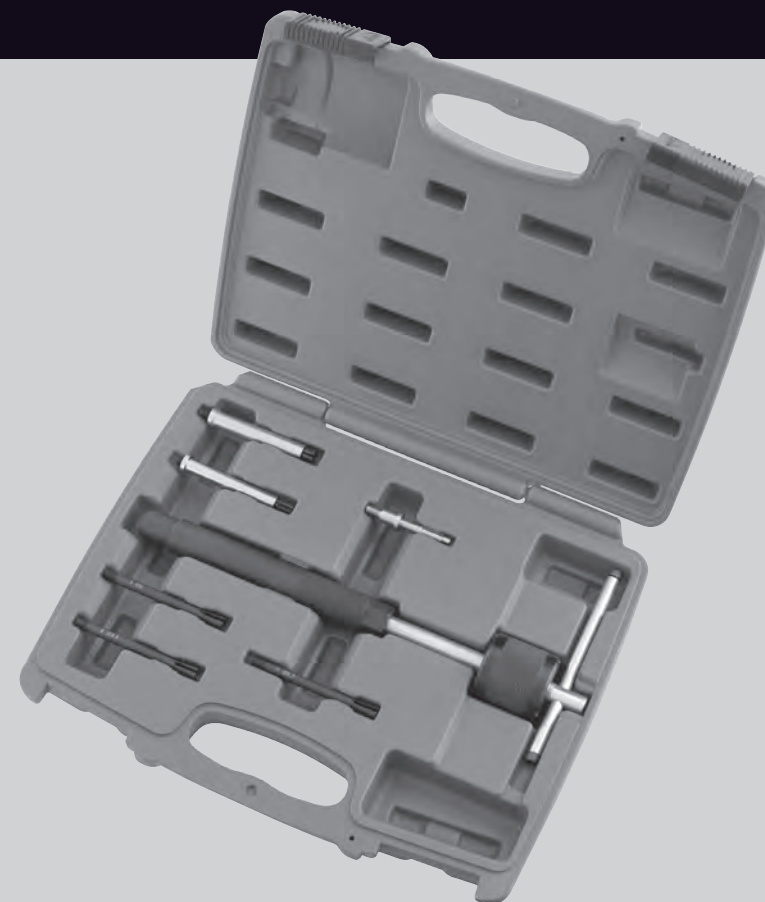


LASER[®]

5362

Glow Plug Puller Kit

7pc

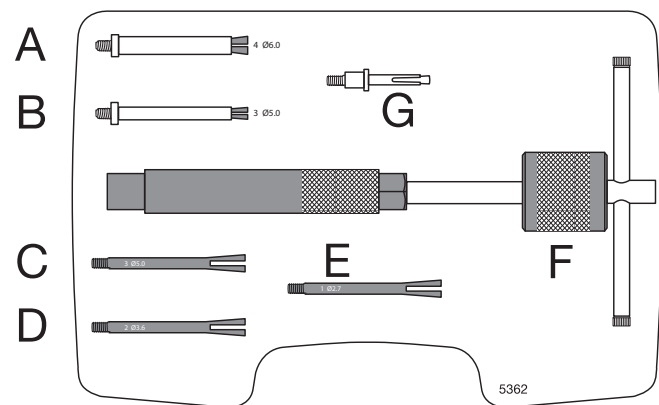


- A dual purpose diesel glow plug puller kit complete with attachments to grip either external or internal sections of the broken glow plug allowing it to be withdrawn.

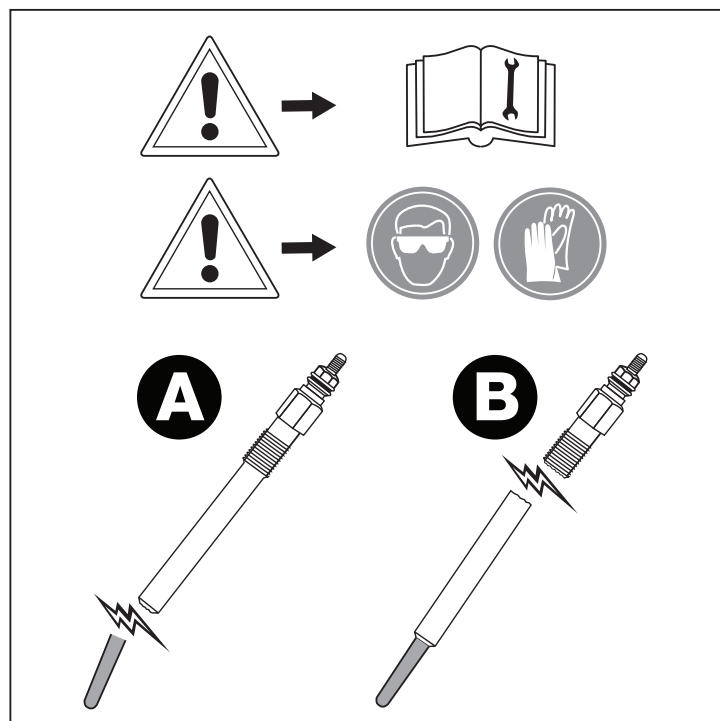
www.lasertools.co.uk

www.lasertools.co.uk

Components



A	External grip (7.7mm internal Ø) Includes size 4 (6.0 mm) contraction collet
B	External grip (6.8mm internal Ø) Includes size 3 (5.0 mm) contraction collet
C	Contraction collet: size 3 (5.0 mm)
D	Contraction collet: size 2 (3.6 mm)
E	Contraction collet: size 1 (2.7 mm)
F	T-bar slide hammer/puller
G	Internal (expansion collet) puller

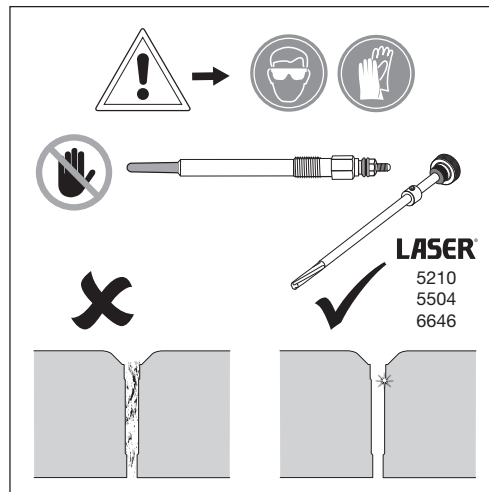
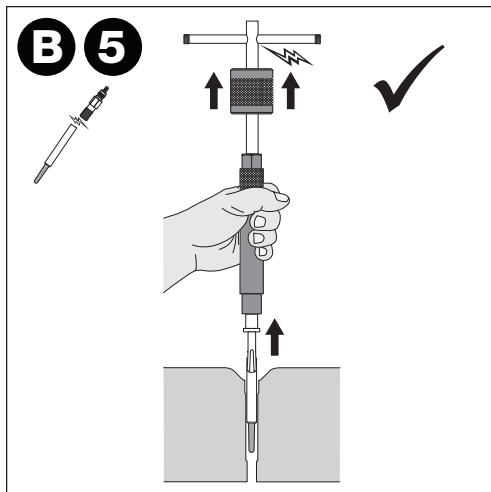


Precautions

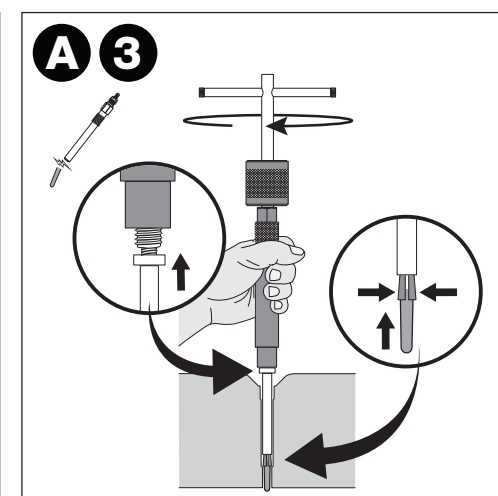
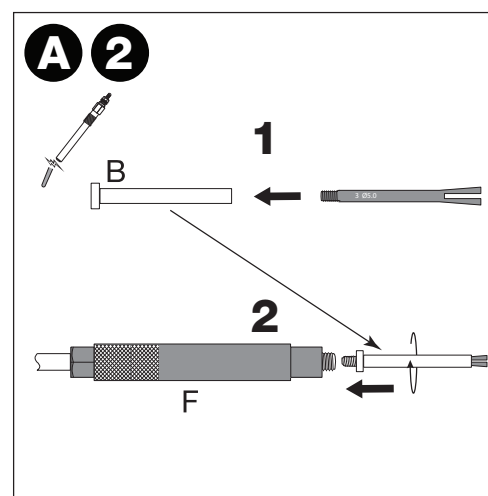
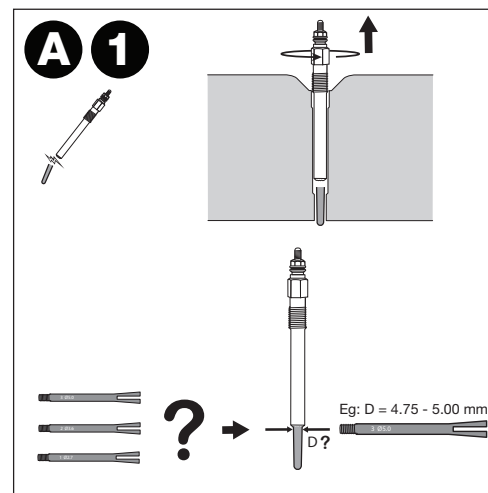
- No liability is accepted for incorrect use of this product.
- Maintain tools in a good and clean condition.
- Where correct eye protection, particularly when cleaning any swarf away from engine.
- When finished, account for all tools and parts being used. Do not leave them in or near the engine. Return all parts to the case and store in a safe, dry place.

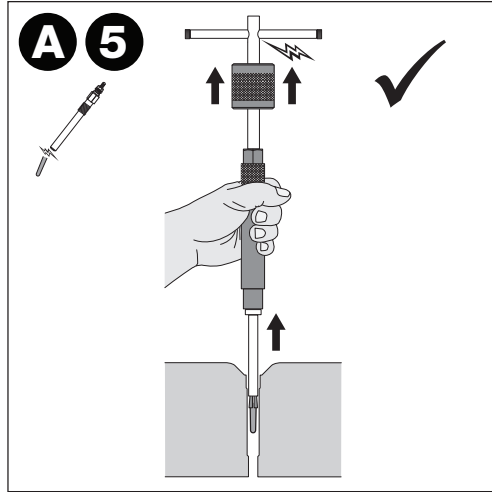
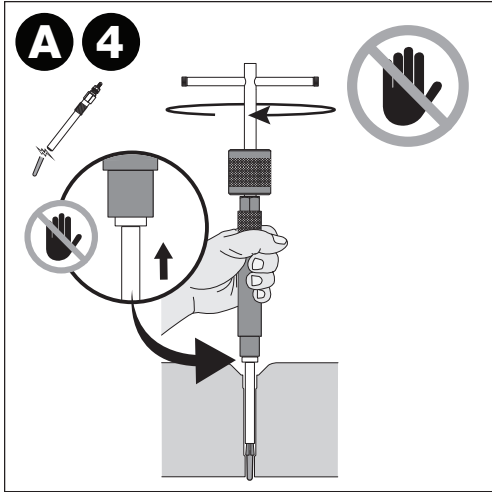


Safety First. Be Protected.



A: Glow Plug Broken at Tip (Grip Externally)





B: Glow Plug Broken Off Below Threaded Section (Grip Internally)

