

## 6530 - 6531 Spare Parts Available

6530		6531	
Part Number	Description	Part Number	Description
1925	Rubber plate and top cover	1931	Rubber plate and top cover
1927	Balloon assembly	1972	Balloon assembly
1928	Safety blow-off valve	1973	Safety blow-off valve
1929	Switch (raise / lower)	1974	Switch (raise / lower)
1930	Switch grip handle	1975	Switch grip handle

Our products are designed to be used correctly and with care for the purpose for which they are intended. No liability is accepted by the Tool Connection for incorrect use of any of our products, and the Tool Connection cannot be held responsible for any damage to personnel, property or equipment when using the tools. Incorrect use will also invalidate the warranty.

If applicable, the applications database and any instructional information provided has been designed to offer general guidance for a particular tool's use and while all attention is given to the accuracy of the data no project should be attempted without referring first to the manufacturer's technical documentation (workshop or instruction manual) or the use of a recognised authority such as Autodata.

It is our policy to continually improve our products and thus we reserve the right to alter specifications and components without prior notice. It is the responsibility of the user to ensure the suitability of the tools and information prior to their use.



**Safety First. Be Protected.**



### Guarantee

If this product fails through faulty materials or workmanship, contact our service department direct on: **+44 (0) 1926 818186**. Normal wear and tear are excluded as are consumable items and abuse.



Distributed by The Tool Connection Ltd

Kineton Road, Southam, Warwickshire CV47 0DR  
T +44 (0) 1926 815000 F +44 (0) 1926 815888  
info@toolconnection.co.uk [www.toolconnection.co.uk](http://www.toolconnection.co.uk)



# LASER<sup>®</sup>

6530 - 6531

## Pneumatic Jacks 2 Tonne

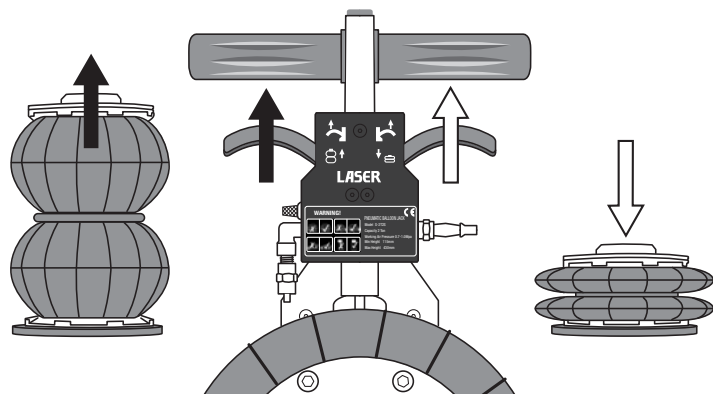
### Instructions



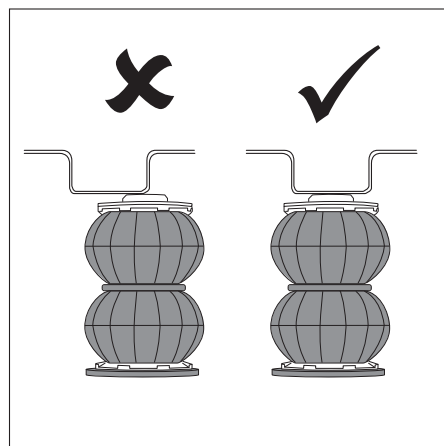
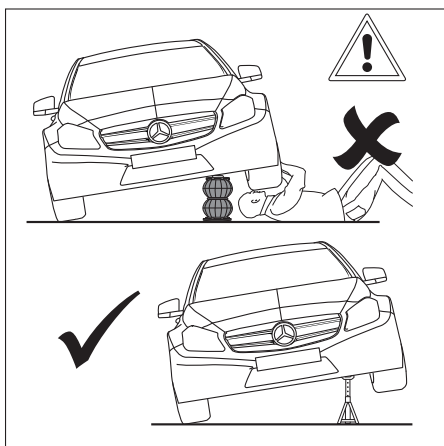
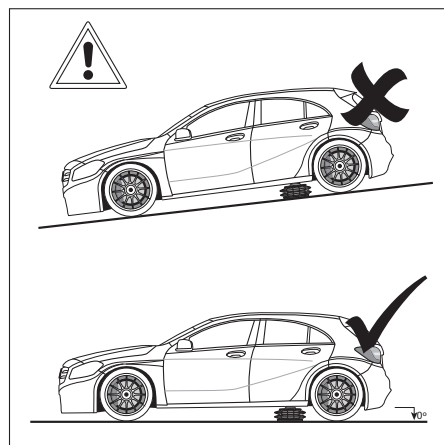
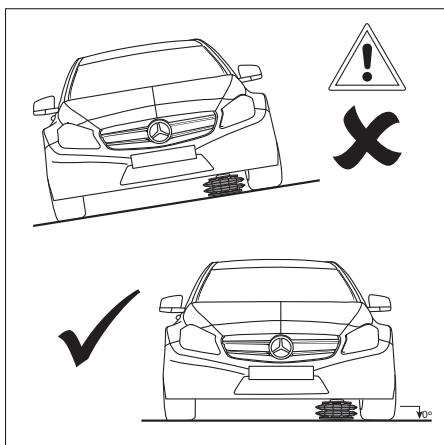
[www.lasertools.co.uk](http://www.lasertools.co.uk)

[www.lasertools.co.uk](http://www.lasertools.co.uk)

## Controls

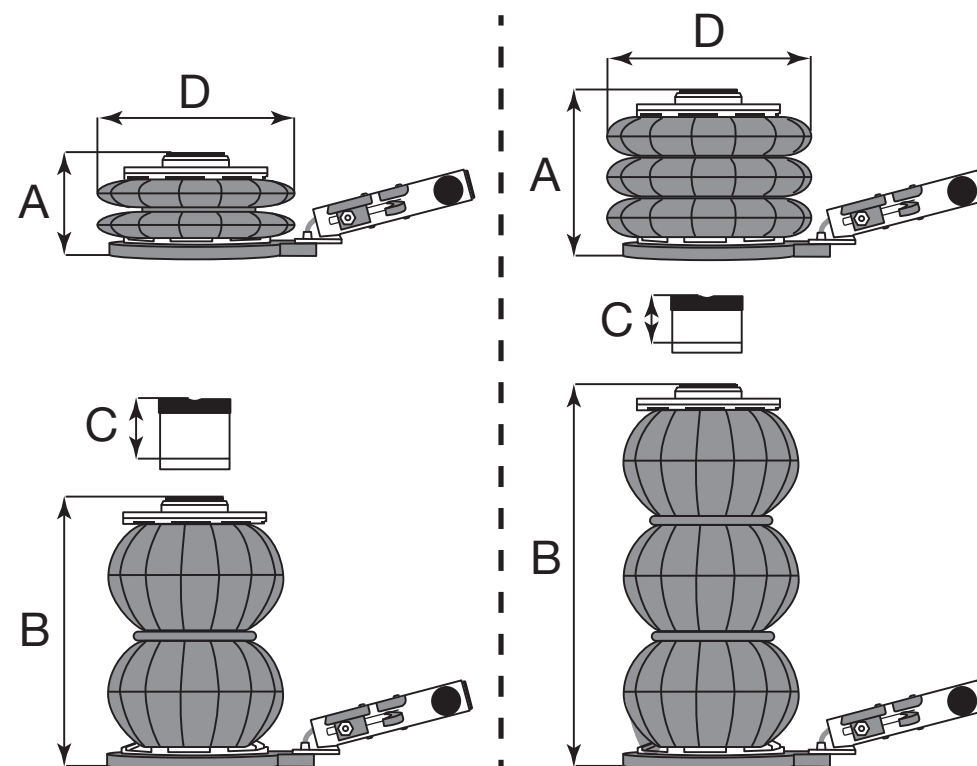


## Caution



6530

6531



Part Number	6530	6531
Capacity	2 Tonne	2 Tonne
Working Air Pressure	0.7-1.0 Mpa (102 – 145 psi)	0.7-1.0 Mpa (102 – 145 psi)
<b>A</b> (minimum height)	115mm	200mm
<b>B</b> (lifting height)	350mm	490mm
<b>C</b> (extension)	80mm	60mm
<b>B + C</b> (maximum height with extension)	430mm	550mm
<b>D</b> (width)	265mm	250mm