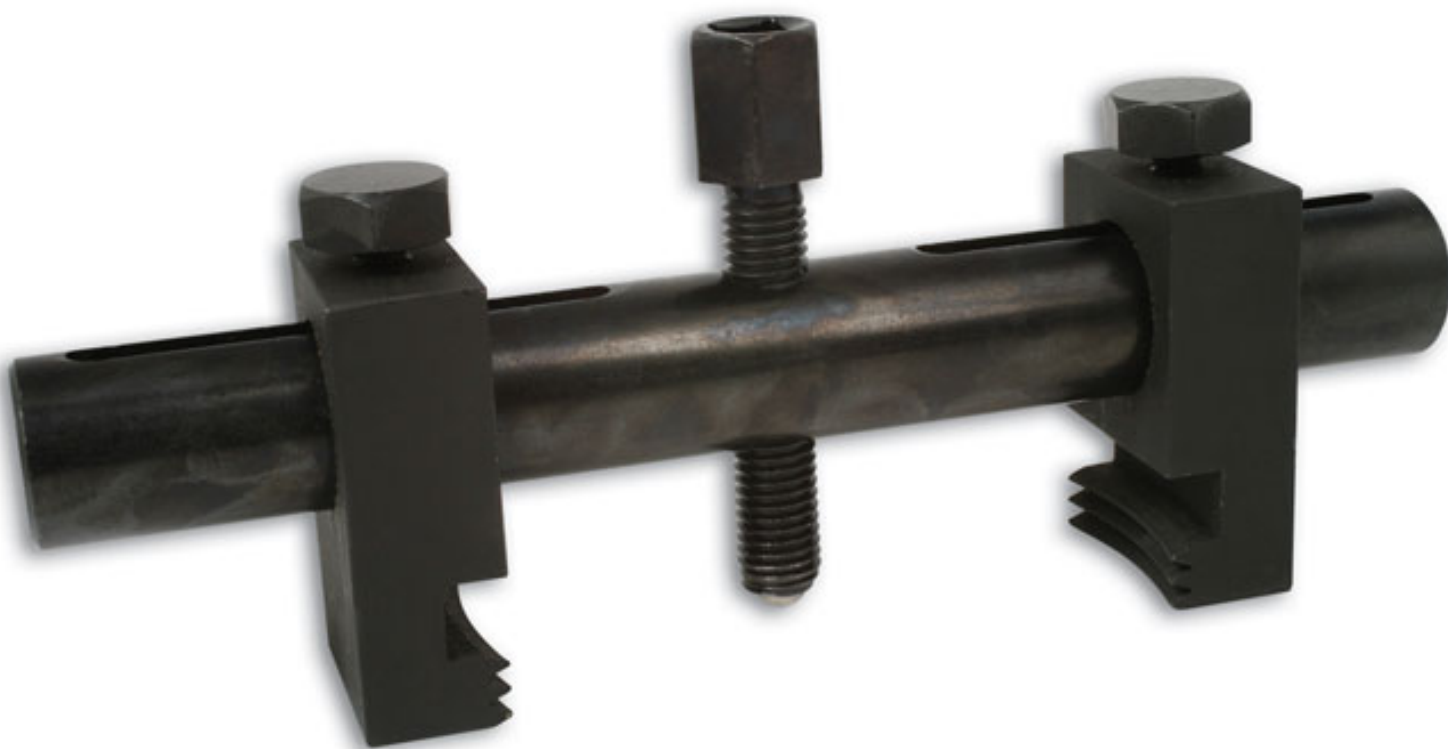


Puller for Ribbed Drive Pulley

This invaluable tool clamps onto any ribbed pulley and extracts it from the drive wheel. Suitable for use on crankshafts, alternators, air conditioning units and water pumps.



Additional Information

- Clamps onto any ribbed pulley and extracts it from the drive wheel.
- Typically used on Peugeot HDi engines.
- Also for use on Ford & some Volvo engines.
- Grooved leg for grip.
- Suitable for use on crankshafts, alternators, air conditioning units and water pumps.

<http://lasertools.co.uk/product/4085>

