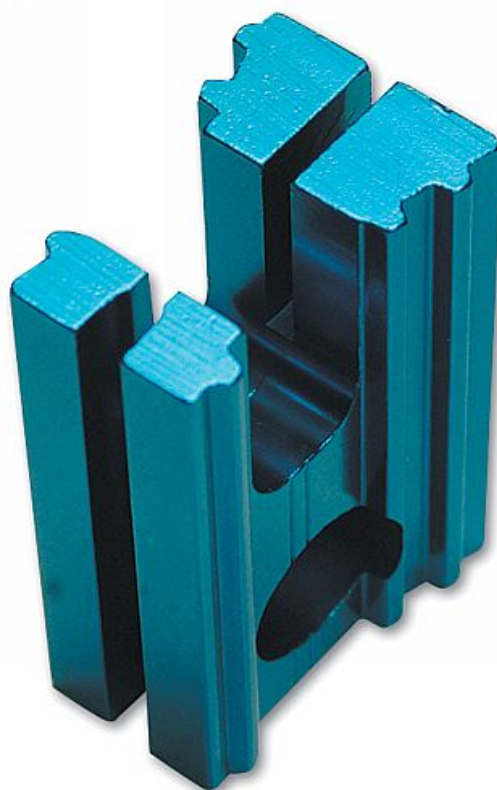


Camshaft Locking Tool - for GM

This camshaft locking tool is specifically designed for use on Vauxhall, Opel & Saab 1.4, 1.6L 16v Ecotec belt driven engines.



Additional Information

- Applications: Vauxhall: Astra-G & H, Combo-C, Corsa-C, Meriva, Signum, Tigra-B, Vectra-B & C, Zafira-A & B (1998 - 2010).
- Saab: 9-3 1.8 petrol engines: Z18XE (2003-2010).
- Equivelant to OEM KM 852.
- For Saab 9-3 1.8 petrol engines: Z18XE (2003-2010).
- Manufactured from adonised aluminium.

<http://lasertools.co.uk/product/3052>