

Mirror Switch Removal Pliers - for BMW

For removing the mirror control switch from door pad/armrest.

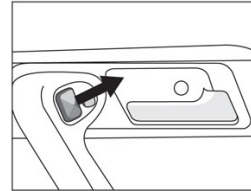


Additional Information

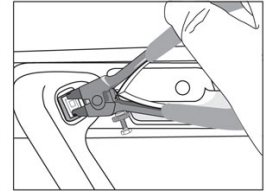
- Required when renewing the control switch or removing the door trim pad on BMW E12, E21, E23, E24, E28, E30, E31, E32, E34, E36, E38 and E39 wing mirrors.
- Equivalent to BMW OEM 61 1 300.
- Spring loaded, soft grip handles.
-
-

<http://lasertools.co.uk/product/5695>





Lift off mirror adjusting button.



Remove switch with tool and disconnect wiring plug.

