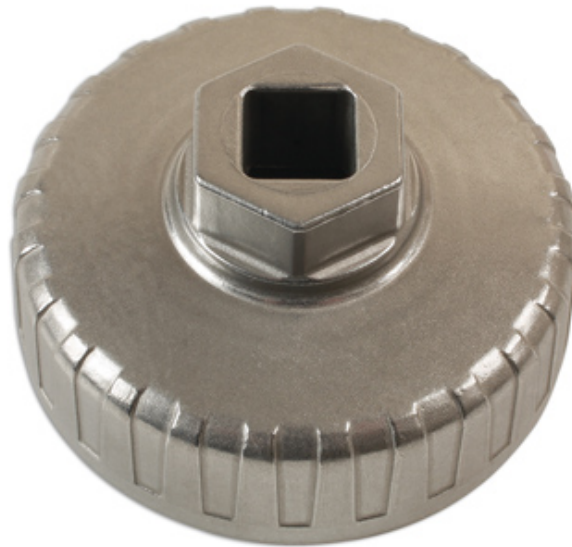


Oil Filter Wrench 1/2"D - 84mm x 15 Flutes

A cup style oil filter wrench with applications across Hyundai and Kia 2.0L & 2.2L common rail diesel engines, removes filters without damage to the filter housing.



Additional Information

- Applications include: Hyundai i30, Sante Fe, Sonata, Tucson; Kia Carens, Cee'd, Magnetis, Sportage.
- Suitable for OEM filter 26310-27420.
- Size: 84mm x 15 flutes x 1/2"D.
- Equipped with a 1/2"D square & 27mm hex allowing use of an appropriate spanner or ratchet set depending on access requirements.
- Manufactured from lightweight aluminium which reduces the chance of damage to the housing.

<http://lasertools.co.uk/product/7259>

