

LASER[®]

Press Supporting Block

Instructions



www.lasertools.co.uk



Distributed by The Tool Connection Ltd
Kineton Road, Southern, Warwickshire CV47 0DR
T +44 (0) 1926 815000 F +44 (0) 1926 815688
info@toolconnection.co.uk www.toolconnection.co.uk

Guarantee

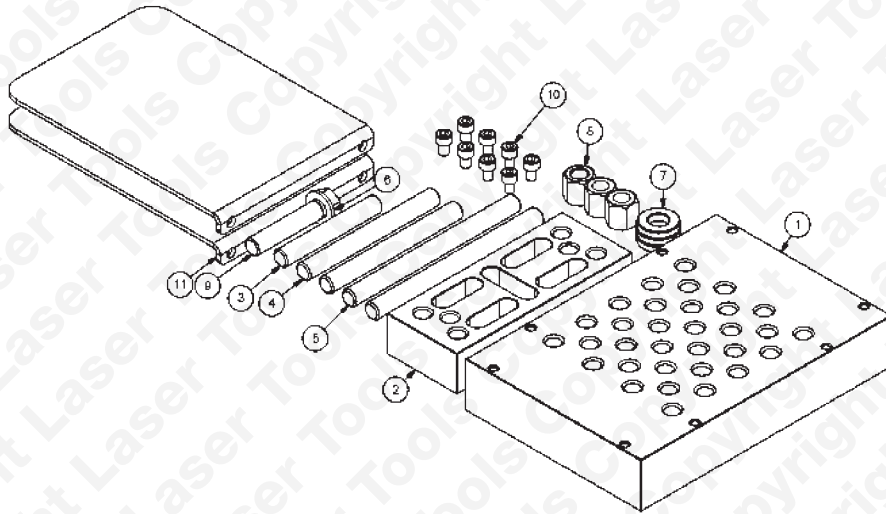
If this product fails through faulty materials or workmanship, contact our service department direct on: +44 (0) 1926 818186. Normal wear and tear are excluded as are consumable items and abuse.



MADE IN
SHEFFIELD

Press Supporting Block

The Universal Press Frame Support has been developed to allow irregular shaped components to be held square on a workshop press to allow bearings/bushes etc. to be pressed out. Maximum load 30 Tonne.

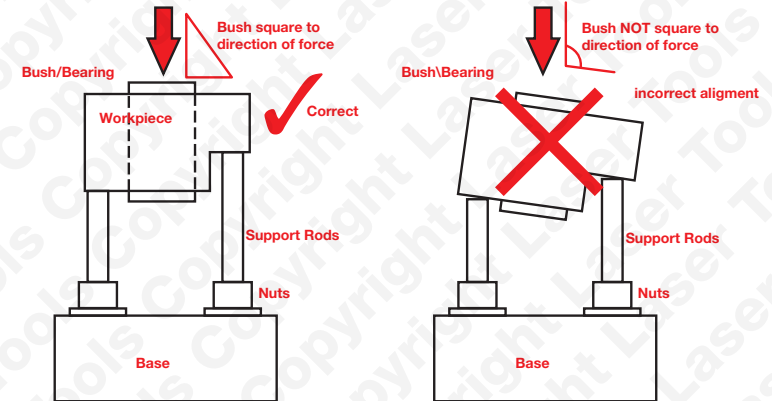


Item	Quantity	Description
1	1	Machined Base Block
2	1	Machined Packing Block
3	1	Support Rod 110mm
4	2	Support Rod 150mm
5	2	Support Rod 190mm
6	1	M16 Flat Washer
7	3	M16 Machined Support Washer
8	3	M16 Machined Support Nut
9	1	M16 X 80mm Setscrew to DIN 933
10	8	M8 X 12mm Caphead Setscrew
11	2	Guard Plates

Warning

- Ensure that all support rods are adjusted so the bearing/bush to be pushed out is held square to the press ram. See Fig. 1.
- Ensure all 3 support rod nuts are fitted with their washers in place and all nuts are tightened down. Always use 3 support rods.

Fig. 1



- Ensure minimum support rod to base block engagement of 1.5 time the diameter of the thread.
- Ensure the support block is properly supported on the workshop press with the base block lips overhanging the hydraulic press support bars as shown here. Fig. 2



Fig. 2

- Where the work piece allows always fit the guard plates provided.
- Always wear appropriate safety clothing which must include safety boots, safety glasses, overalls and gloves.

The Tool Connection cannot be held responsible for any damage caused by using these tools in anyway.