

Our products are designed to be used correctly and with care for the purpose for which they are intended. No liability is accepted by the Tool Connection for incorrect use of any of our products, and the Tool Connection cannot be held responsible for any damage to personnel, property or equipment when using the tools. Incorrect use will also invalidate the warranty.

If applicable, the applications database and any instructional information provided has been designed to offer general guidance for a particular tool's use and while all attention is given to the accuracy of the data no project should be attempted without referring first to the manufacturer's technical documentation (workshop or instruction manual) or the use of a recognised authority such as Autodata.

It is our policy to continually improve our products and thus we reserve the right to alter specifications and components without prior notice. It is the responsibility of the user to ensure the suitability of the tools and information prior to their use.



Safety First. Be Protected.

Guarantee

If this product fails through faulty materials or workmanship, contact our service department direct on: **+44 (0) 1926 818186**. Normal wear and tear are excluded as are consumable items and abuse.



Distributed by The Tool Connection Ltd

Kineton Road, Southam, Warwickshire CV47 0DR
T +44 (0) 1926 815000 F +44 (0) 1926 815888
info@toolconnection.co.uk www.toolconnection.co.uk

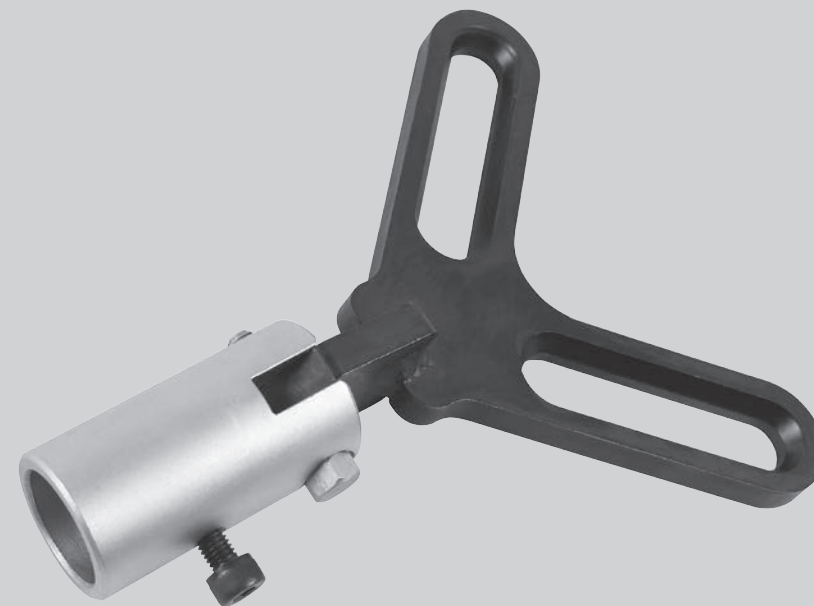
7136_Instructions_V1



LASER[®]

7136

Control Arm Supporting Device

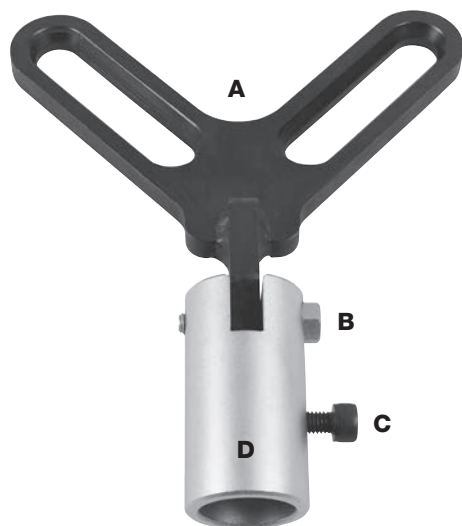


- Designed to fit on top of a standard hydraulic transmission jack and convert the jack into a Hub Support device. This allows load to be applied vertically to the hub to assist in the separation of the bottom ball joint, etc. the jack can then take the load of the drive flange, hub and suspension strut assembly while the lower arm etc. are worked on. Particularly use full when working on vehicles with restricted suspension droop.

www.lasertools.co.uk

www.lasertools.co.uk

Components



Ref	Description
A	Hub Mounting Plate
B	Mounting Plate Fixing Bolt
C	Transmission Jack Grub Screw
D	Base Mount

The following instructions are for guidance only. The use of this Suspension Hub Support is purely down to the user's discretion and The Tool Connection Ltd. cannot be held responsible for any damage caused what so ever.



Caution

CAUTION: WHEN USING THIS TOOL WITH THE VEHICLE SUPPORTED ON A RAMP DO NOT JACK THE HUB UP TOO MUCH AS THIS COULD TIP THE VEHICLE OFF OF THE RAMP.

DO NOT LOWER THE VEHICLE RAMP WITH THE TOOL AND TRANSMISSION JACK STILL IN-PLACE.

Instructions

- Mount the tool on the transmission jack and tighten the Grub Screw (C)
NB: **Designed to fit transmission jacks with a 30mm shaft.**
- Place the jack assembly against the drive flange so two of the wheel fixings align with the slots in the Hub Mounting Plate (A) with the chamfered edges facing out.
- Fit and tighten the wheel nuts/bolts.

