

LASER[®]

Part No. 9001

Cooling System Flusher

Pulsating Jet

Instructions

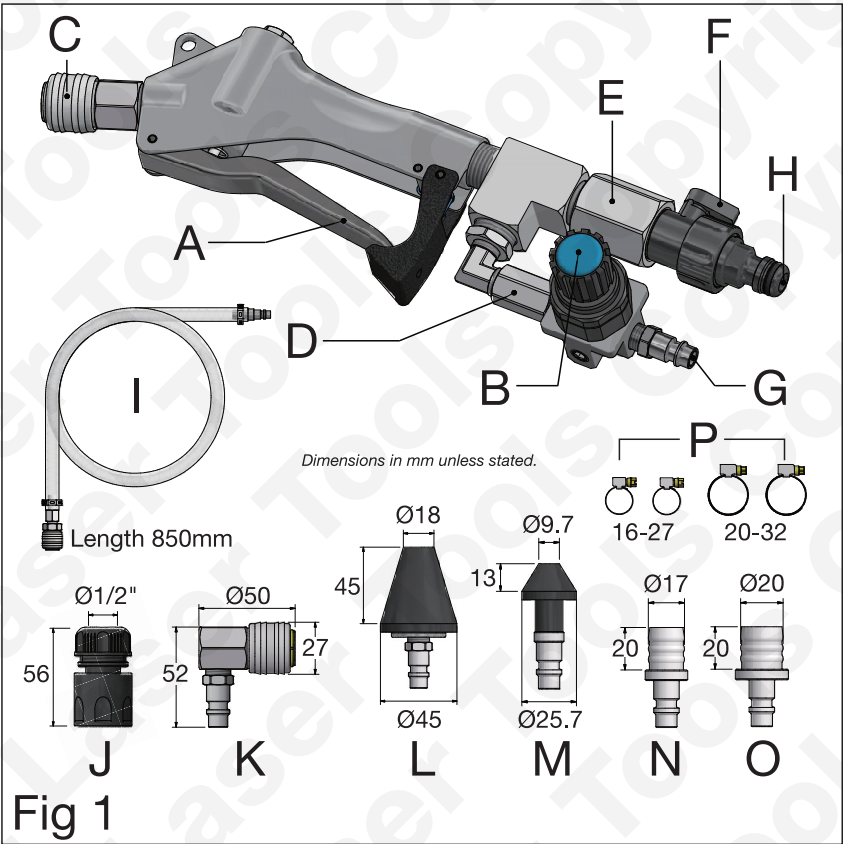


www.lasertools.co.uk

Introduction

Designed to be used with both the workshop compressed-air supply and a suitable water hose, the Laser 9001 produces a powerful yet fully controllable pulsating jet. The unit's internal mechanism can be adjusted to give a steady constant flow, or a pulsating flow (refer to Figure 4). Ideal for cleaning radiators, engine blocks, heater matrix, etc. Ideal for cleaning out corrosion build up, oil residue from head gasket leaks and water pump debris build up. Can be used in situ, or off the vehicle. Universal fitment: the kit includes adaptors for large bore main hoses and smaller heater-matrix sizes. Includes built-in back-pressure control valve to prevent air pressure pressurising the water feed hose.

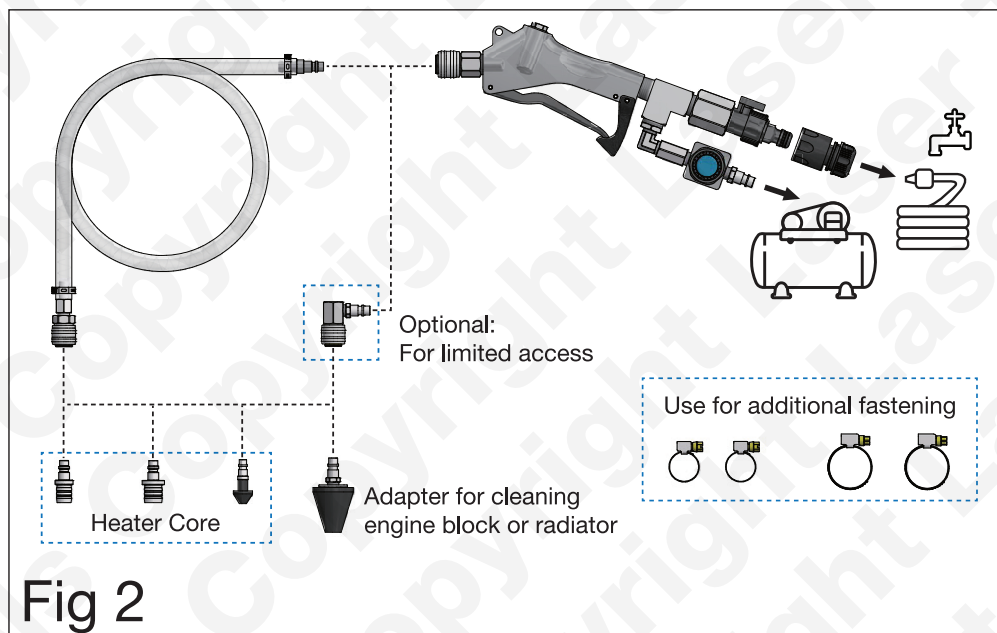
Components



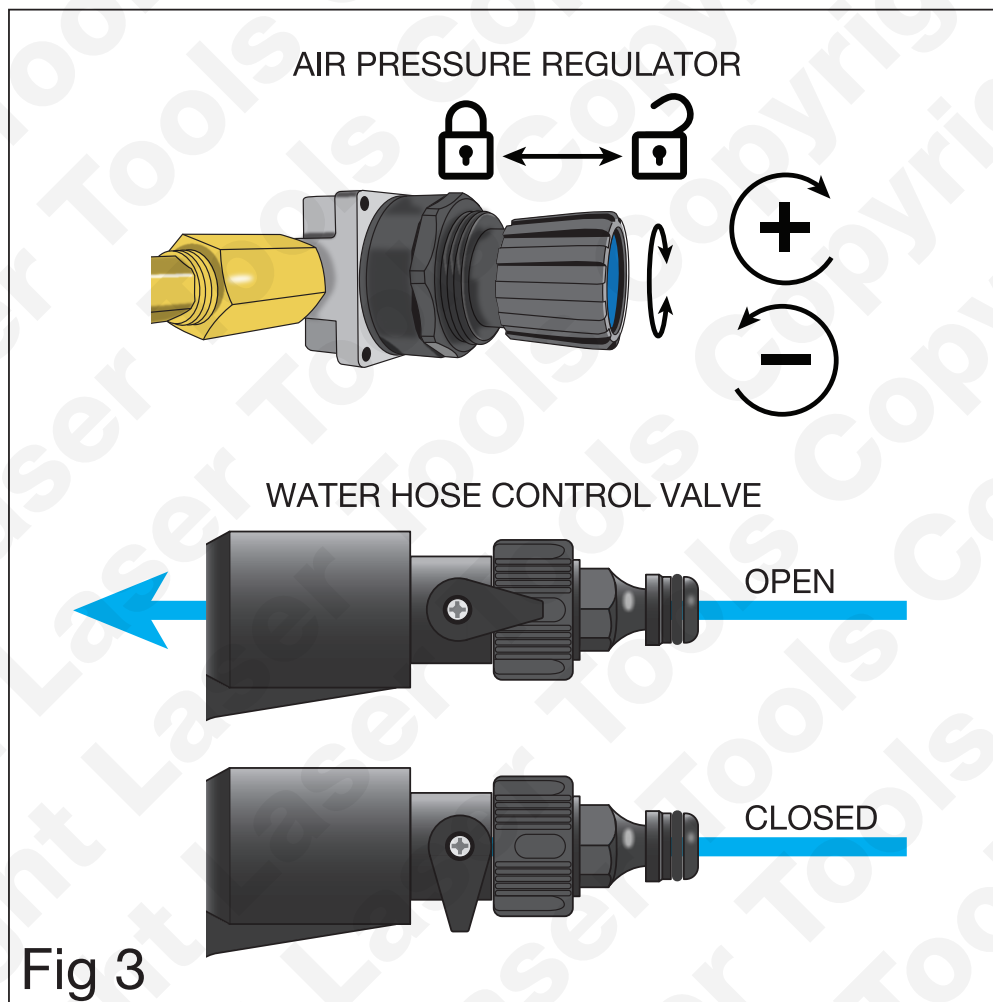
Ref.	Description
A	Trigger
B	Air-pressure regulator
C	Quick-coupler (hose or adaptors)
D	Air-line back-pressure one-way valve
E	Water supply back-pressure one-way valve
F	Water supply control valve (OFF/ON)
G	Air supply connector
H	Water supply hose connector

Ref.	Description
I	Flush hose
J	Connector for garden-type hoses
K	90° connector
L	Conical adaptor (radiator filler neck)
M	Small conical adaptor (heater core/hose)
N	Heater core adaptor Ø 5/8"
O	Heater core adaptor Ø 1/2"
P	Hose clamps

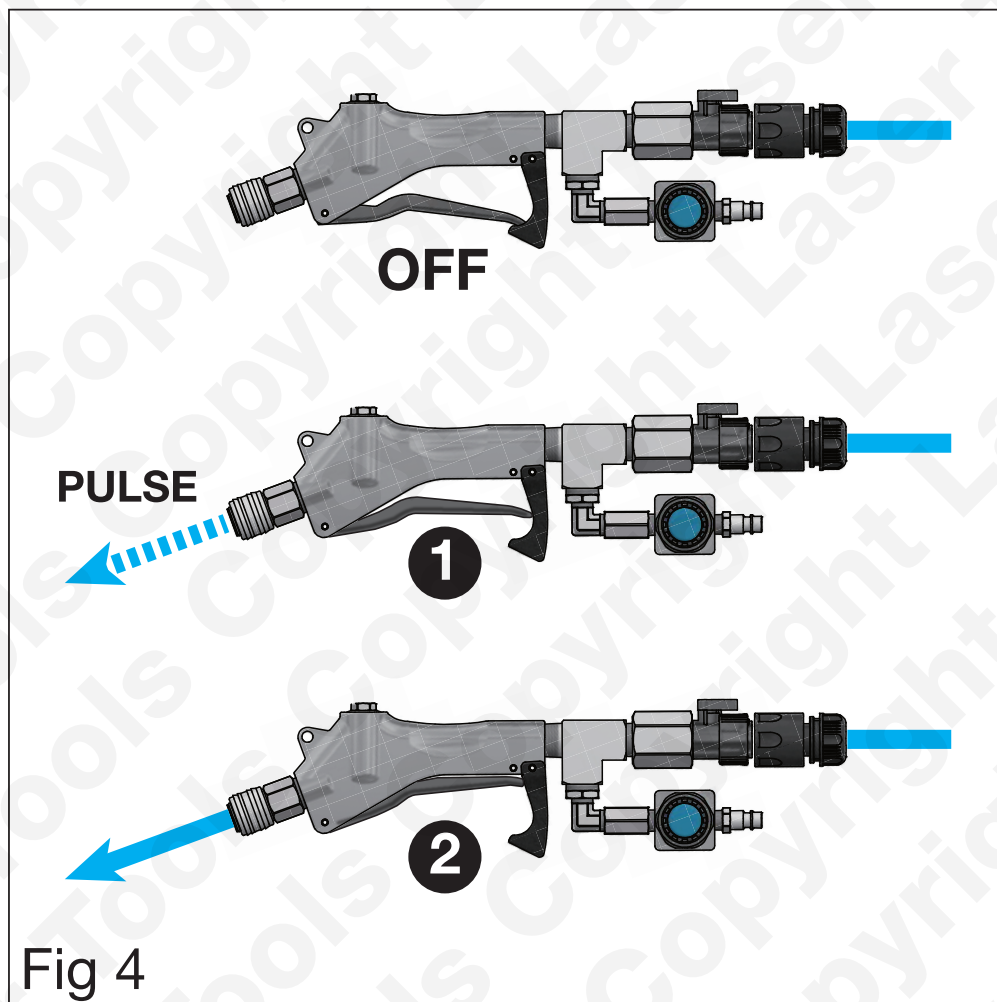
Instructions



Instructions



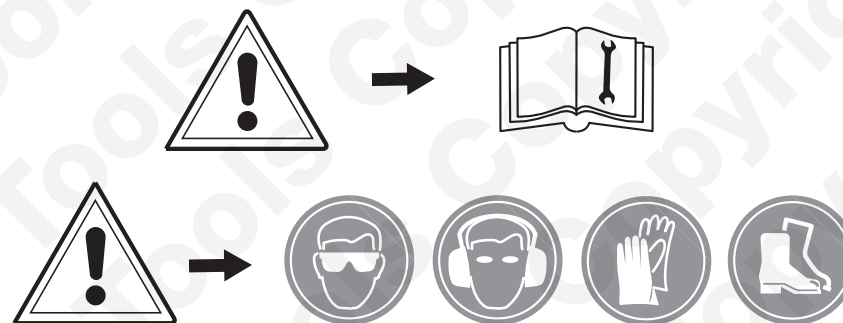
Instructions



Disconnection:

Refer to **Figure 1**: Switch OFF the water supply control valve (**F**) and wind-back the air-pressure regulator (**B**) before disconnecting the water supply and the compressed-air line.

Precautions



- Always read and understand these instructions carefully before using the tool.
- Always refer to manufacturer's documentation and recommendations for cooling system maintenance procedure. (For example: thermostat may need to be removed for cooling-system flushing.)
- Wear eye, ear, hand and foot protection.
- Observe standard workshop safety procedures when using the tool kit.
- Do not let untrained personnel use this tool kit.
- Keep out of reach of children.
- Always maintain the cooling system flusher in good condition, keeping it clean and dust-free. Never use water, solvents or aggressive cleaning products. Store in a dry, secure area.
- Dispose of device according to relevant local authority guidelines.
- No liability is accepted for incorrect use of this product — do not use the product for tasks it is not designed for. Use the product correctly and with care. Failure to do so may cause damage and/or personal injury and will invalidate the warranty.

Our products are designed to be used correctly and with care for the purpose for which they are intended. No liability is accepted by the Tool Connection for incorrect use of any of our products, and the Tool Connection cannot be held responsible for any damage to personnel, property or equipment when using the tools. Incorrect use will also invalidate the warranty.

If applicable, the applications database and any instructional information provided has been designed to offer general guidance for a particular tool's use and while all attention is given to the accuracy of the data no project should be attempted without referring first to the manufacturer's technical documentation (workshop or instruction manual) or the use of a recognised authority such as Autodata.

It is our policy to continually improve our products and thus we reserve the right to alter specifications and components without prior notice. It is the responsibility of the user to ensure the suitability of the tools and information prior to their use.



Safety First. Be Protected.



www.lasertools.co.uk



Distributed by The Tool Connection Ltd
Kineton Road, Southam, Warwickshire CV47 0DR
T +44 (0) 1926 815000 F +44 (0) 1926 815888
info@toolconnection.co.uk www.toolconnection.co.uk

9001_Instructions_V1

Guarantee

If this product fails through faulty materials or workmanship, contact our service department direct on: **+44 (0) 1926 818186**. Normal wear and tear are excluded as are consumable items and abuse.

www.lasertools.co.uk