

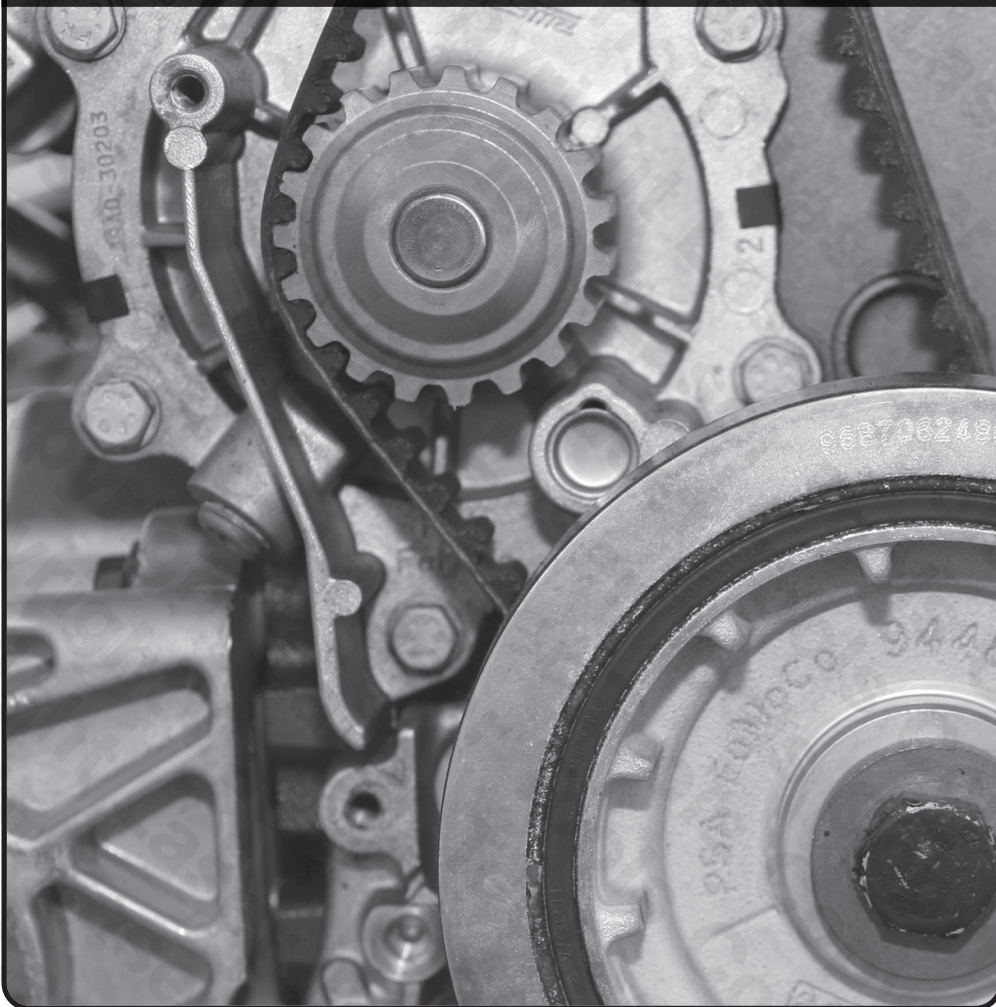
# LASER<sup>®</sup>

Part No. 4083

## Instructions

### Engine Timing Tool Kit

VAG 3cyl 6 & 12 Valve



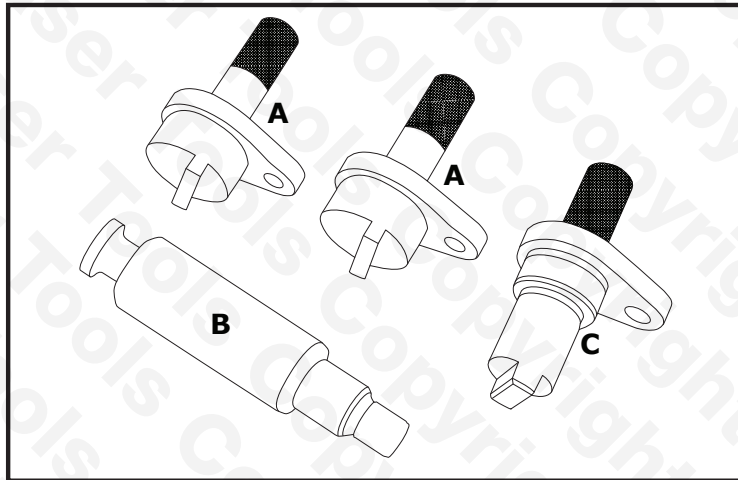
[www.lasertools.co.uk](http://www.lasertools.co.uk)

## Introduction

The 4083 provides the camshaft locking tools required for the 1200cc 6 and 12 valve engines used in Seat, Skoda and Volkswagen (2002 to 2015).

- Seat Applications: Cordoba (2002 to 2008), Ibiza (2002 to 2015), Toledo (2012 to 2015).
- Skoda Applications: Fabia (2002 to 2015), Praktik (2007 to 2015), Rapid (2012 to 2015), Roomster (2006 to 2015).
- Volkswagen applications include: Fox (2005 to 2012), Polo (2002 to 2014).
- Engine locking tools for 1.2L, 6 and 12 valve engines. See instructions for engine codes covered.
- Equivalent to OEM tool codes: T10123, T10121, T10120.

## Components



Ref.	Comp. Code	OEM Ref.	Description
A	C291	T10123	Camshaft Aligning Tool (2) 12v
B	C292	T10121	Crankshaft Locking Tool 6v, 12v
C	C293	T10120	Camshaft Aligning Tool 6v

The following instructions are for guidance only. Please refer to OEM derived data such as the vehicle manufacturers' own data or Autodata.

The use of this engine timing tool kit is purely down to the user's discretion and The Tool Connection Ltd. cannot be held responsible for any damage caused whatsoever.



[www.lasertools.co.uk](http://www.lasertools.co.uk)

## Applications

Make, Model, Year			Engine Codes	
Seat	Cordoba	2002 - 2008	1.2 6V	1.2 12V
	Ibiza	2002 - 2015	AWY	AZQ
	Toledo	2012 - 2015	BBM	BME
Skoda	Fabia	2002 - 2015	BMD	BXV
	Praktik	2007 - 2015	CHFA	BZG
	Rapid	2012 - 2015	CHFB	CEVA
	Roomster	2006 - 2015		CGPA
Volkswagen	Fox	2005 - 2012		CGPB
	Polo	2002 - 2014		CGPC

Always refer to the website for most up to date applications:  
[www.lasertools.co.uk/product/4083](http://www.lasertools.co.uk/product/4083)

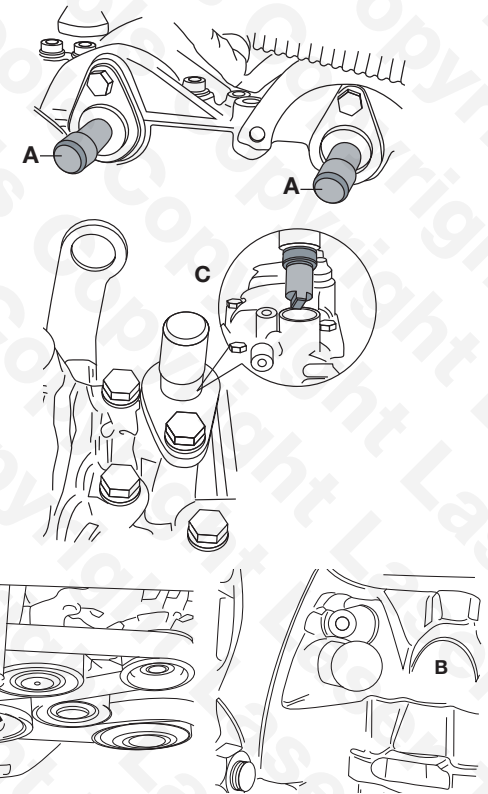
## Instructions

Use Camshaft Alignment Tools (A) for 12v engines and tool (C) for 6v engine.

The slot in the end of the camshaft must be aligned horizontally, but if the Camshaft Tool (A) cannot be fitted it may be necessary to rotate the engine 360°

The Crankshaft Alignment Pin enables the crankshaft to be locked in the correct timing position on both types of engine.

The Crankshaft may require to be rotated using the pulley centre-bolt until the slots in the camshaft are positioned horizontally and the Crankshaft Pin (B) can be correctly inserted into the slot in the crankshaft, it may be necessary to turn the crankshaft 360°



[www.lasertools.co.uk](http://www.lasertools.co.uk)

## Safety Warnings - please read

- If the engine has been identified as an Interference engine, damage to the engine will occur if the timing belt has been damaged. A compression check of all the cylinders should be taken before the cylinder head (s) are removed.
- Do not turn crankshaft or camshaft when the timing belt/chain has been removed.
- To make turning the engine easier, remove the spark plugs/glow plugs or injectors.
- Observe all tightening torques.
- Do not turn the engine using the camshaft or any other sprocket.
- Disconnect the battery earth lead (check Radio code is available).
- Do not use cleaning fluids on belts, sprockets or rollers.
- Some toothed timing belts are not interchangeable. Check the replacement belt has the correct tooth profile.
- Always mark the belt with the direction of running before removal.
- Do not lever or force the belt onto its sprockets.
- Do not use timing pins to lock the engine when slackening or tightening the crankshaft pulley bolts.
- ALWAYS REFER TO A REPUTABLE MANUFACTURERS WORKSHOP MANUAL.

Our products are designed to be used correctly and with care for the purpose for which they are intended. No liability is accepted by the Tool Connection for incorrect use of any of our products, and the Tool Connection cannot be held responsible for any damage to personnel, property or equipment when using the tools. Incorrect use will also invalidate the warranty.

If applicable, the applications database and any instructional information provided has been designed to offer general guidance for a particular tool's use and while all attention is given to the accuracy of the data no project should be attempted without referring first to the manufacturer's technical documentation (workshop or instruction manual) or the use of a recognised authority such as Autodata.

It is our policy to continually improve our products and thus we reserve the right to alter specifications and components without prior notice. It is the responsibility of the user to ensure the suitability of the tools and information prior to their use.



4083\_Instructions\_V4



When you have finished with this product please recycle it

[www.lasertools.co.uk](http://www.lasertools.co.uk)



Distributed by The Tool Connection Ltd

Kington Road, Southam, Warwickshire CV47 0DR  
T +44 (0) 1926 815000 F +44 (0) 1926 815888  
[info@toolconnection.co.uk](mailto:info@toolconnection.co.uk) [www.toolconnection.co.uk](http://www.toolconnection.co.uk)

### Guarantee

If this product fails through faulty materials or workmanship, contact our service department direct on: **+44 (0) 1926 818186**. Normal wear and tear are excluded as are consumable items and abuse.

[www.lasertools.co.uk](http://www.lasertools.co.uk)