

Precautions

- If vehicle is raised, ensure it is adequately supported with axle stands, ramps, etc, as appropriate.
- Wear suitable eye protection.
- Always grease the centre force screw before and after every job with a high quality molybdenum disulphide grease.
- Maintain the tools in good and clean condition and always return to case for safekeeping.
- DO NOT use tools if damaged or worn.
- DO NOT USE AIR TOOLS WITH THIS PRODUCT.



Safety First. Be Protected.



Guarantee

If this product fails through faulty materials or workmanship, contact our service department direct on: **+44 (0) 1926 818186**. Normal wear and tear are excluded as are consumable items and abuse.



Distributed by The Tool Connection Ltd

Kington Road, Southam, Warwickshire CV47 0DR
T +44 (0) 1926 815000 **F** +44 (0) 1926 815888
info@toolconnection.co.uk www.toolconnection.co.uk

4847

LASER[®]

Drive Shaft I Drive Flange Puller

Instructions



Designed for pulling on the drive shaft to force the drive flange / hub into the bearing housing.

www.lasertools.co.uk

Drive Shaft | Drive Flange Puller

Includes adaptors:

M15: Subaru

M20: VW Beetle; Touareg; Porsche Cayenne

M22: BMW E30

M24: BMW E36; Mercedes-Benz W203

M27: BMW E32; E34; E38; E39; X5

M39: BMW E32; E36; E34

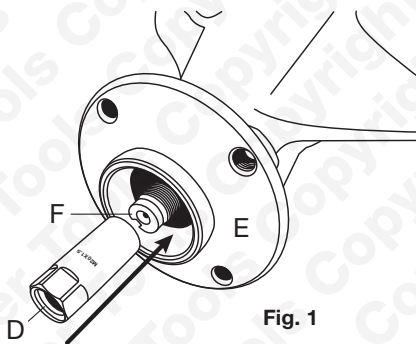


Fig. 1

A	Centre Force Screw
B	Force Nut
C	Reaction Sleeve (includes bearing)
D	Adaptors (see list)
E	Drive Flange / Hub
F	Drive Shaft

Instructions

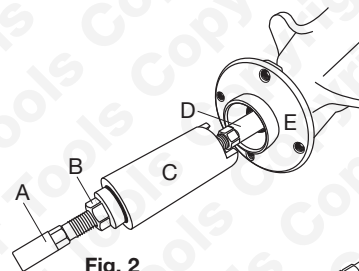


Fig. 2

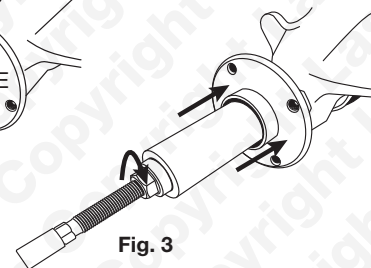


Fig. 3

Refer to diagrams.

- Place drive shaft into bearing then place Drive Flange / Hub into position.
- Screw correct adaptor **D** (see list) onto threaded end of drive shaft. (Fig. 1)
- Locate assembled tool and screw the centre force screw **A** into the adaptor **D**. (Fig. 2)
- Run force nut **B** up the centre force screw **A** until it locates into the reaction sleeve bearing **C**.
- Turn force nut **B** (24mm hex) to pull on the drive shaft and force the drive flange / hub into the bearing housing.

Note: The threaded portion of the Centre Force Screw (**A**) must be lubricated with a high quality molybdenum disulphide grease.

Consumable items:

Centre Force Screw (**A**) and the Force Nut (**B**) are consumable items and thus not covered by the Tool Connection guarantee.