

LASER[®]

Part No. 6422

Workshop Press Support Block 50 Tonne

Instructions



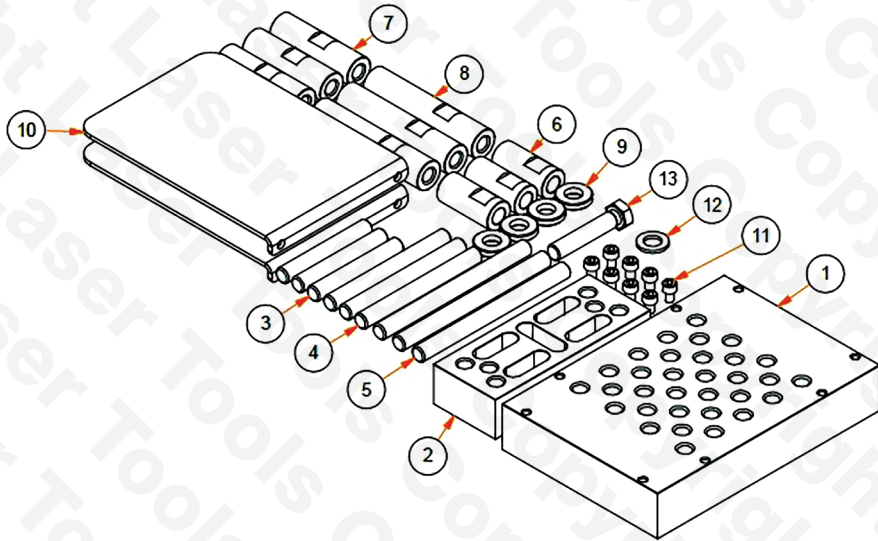
www.lasertools.co.uk

Introduction

Developed to allow irregular shaped components to be held square on a workshop press to allow bearings/bushes etc. to be pressed out.

The specially designed sleeved support pins allow the full potential of support block to be realised at 50 tonne max.

Components



Ref.	Quantity	Description
1	1	Machined Base Block
2	1	Machined Packing Block
3	3	Support Rod 110mm Long
4	3	Support Rod 150mm Long
5	3	Support Rod 190mm Long
6	3	Short Rod Sleeves
7	3	Medium Rod Sleeves
8	3	Long Rod Sleeves
9	4	M16 Machined Washers (Support Rods)
10	2	Guard Plates
11	8	Cap Head Screws
12	1	Washer for 13
13	1	Bolt (use to secure 2 to 1)

Warnings

- Ensure that all support rods are adjusted so the bearing/bush to be pushed out is held square to the press ram. See Fig. 1.
- Ensure all support rod outer sleeves are fitted with their washers in place and are fully tightened down. Always use a minimum of 3 support rods.
- All support pins must be screwed in to the press block by at least 1.5 times the diameter of the pin.
- Ensure minimum support rod to base block engagement of 1.5 time the diameter of the thread.
- Ensure the support block is properly supported on the workshop press with the base block bottom screws overhanging the hydraulic press support bars as shown here. Fig. 2.
- Where the work piece allows always fit the guard plates provided.
- Where the machined packing block is used ensure the block is fixed to the main base with bolt (13) and washer (12).
- Always wear appropriate safety clothing which must include safety boots, safety glasses, overalls and gloves.

The Tool Connection cannot be held responsible for any damage caused by using these tools in anyway.

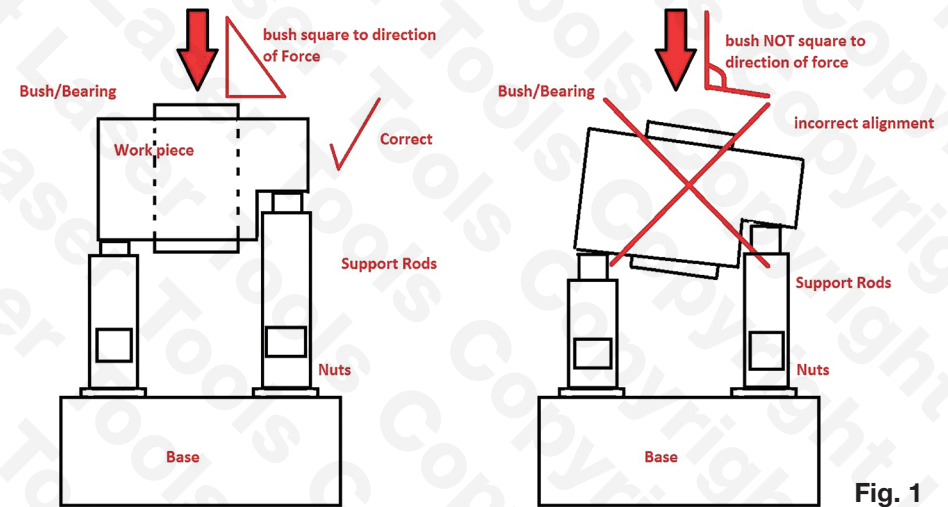


Fig. 1

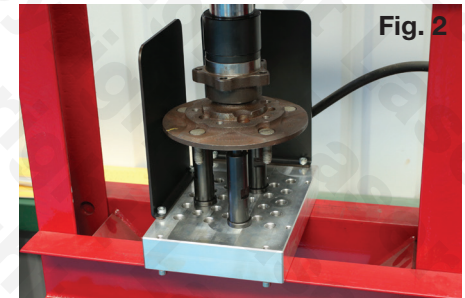
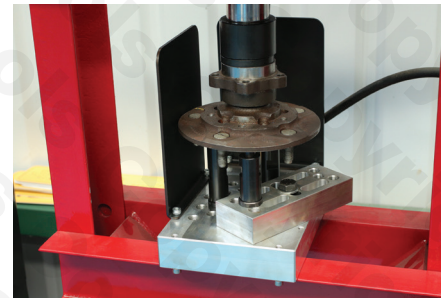


Fig. 2

Our products are designed to be used correctly and with care for the purpose for which they are intended. No liability is accepted by the Tool Connection for incorrect use of any of our products, and the Tool Connection cannot be held responsible for any damage to personnel, property or equipment when using the tools. Incorrect use will also invalidate the warranty.

If applicable, the applications database and any instructional information provided has been designed to offer general guidance for a particular tool's use and while all attention is given to the accuracy of the data no project should be attempted without referring first to the manufacturer's technical documentation (workshop or instruction manual) or the use of a recognised authority such as Autodata.

It is our policy to continually improve our products and thus we reserve the right to alter specifications and components without prior notice. It is the responsibility of the user to ensure the suitability of the tools and information prior to their use.



Safety First. Be Protected.

Manufacturer: The Tool Connection Ltd

EU Authorised Representative:

Comply Express Unipessoal Limitada,
StartUp Madeira, EV141, Campus da Penteada,
9020 105 Funchal, Portugal



6422_Instructions_V3



www.lasertools.co.uk



Distributed by The Tool Connection Ltd

Kington Road, Southam, Warwickshire CV47 0DR
T +44 (0) 1926 815000 F +44 (0) 1926 815888
info@toolconnection.co.uk www.toolconnection.co.uk

Guarantee

If this product fails through faulty materials or workmanship, contact our service department direct on: **+44 (0) 1926 818186**. Normal wear and tear are excluded as are consumable items and abuse.

www.lasertools.co.uk