

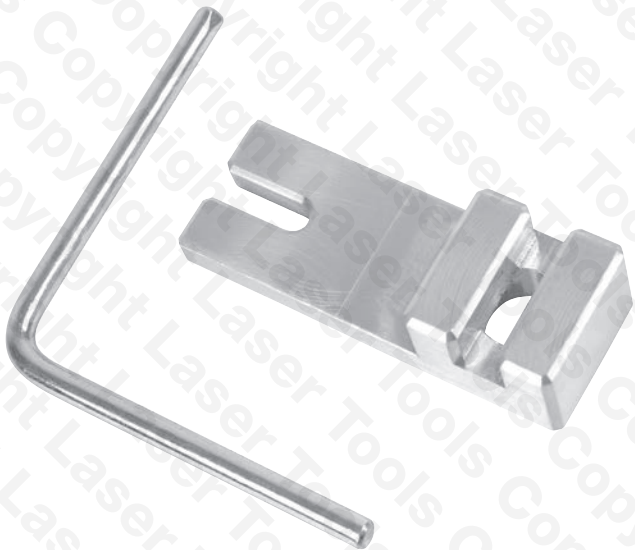
Part No. 6485

# LASER<sup>®</sup>

## Alignment Tool

JLR Automatic Gearboxes

### Instructions

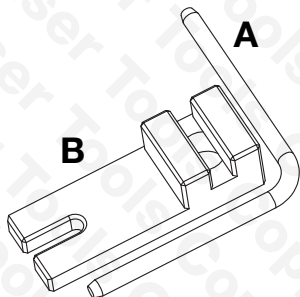


[www.lasertools.co.uk](http://www.lasertools.co.uk)

## Introduction

An essential tool for the correct setting & alignment of the XYZ switch (gear selector position & starter inhibitor switch) on ZF4HP22, ZF4HP24, ZF4HP44 automatic gearboxes fitted to certain Land Rover & Range Rover models.

## Components



Ref.	Comp. Code	OEM Ref.	Description
A			4mm Pin
B	C731	LRT 44-011 307-498	Selector Position Setting Tool

## Applications

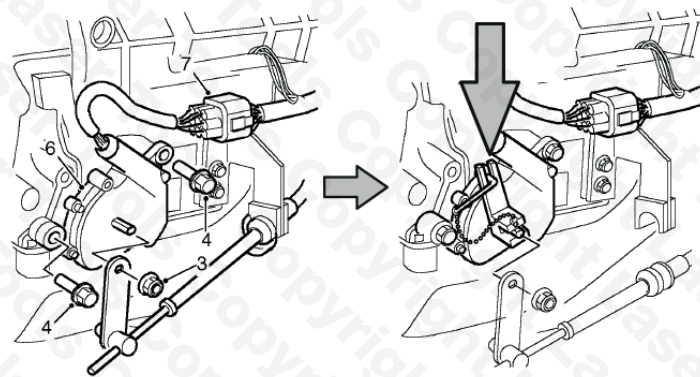
Manufacturer	Model	Year	Gearbox
Land Rover	V8 Defender	1990 - 2005	ZF4HP22, ZF4HP24, ZF4HP44 automatic gearboxes
	Discovery 1 & 2		
Range Rover	Classic	1994 - 2002	
	P38		

Always refer to the website for most up to date applications:  
[www.lasertools.co.uk/product/6485](http://www.lasertools.co.uk/product/6485)

## Instructions

### Fitting and Aligning Inhibitor Switch:

1. Set gear selector shaft in park position by turning fully clockwise.
2. Set gear selector shaft to N by rotating the shaft 2 clicks (detents) anti-clockwise.
3. Place the switch on the shaft, do not tighten fixings.
4. Connect and secure the wiring plug.
5. Fit the bracket to the selector shaft and insert the pin into the tool.
6. Turn the switch till the pin slides in to the hole on the switch body as shown.
7. Tighten the switch mounting screws to the manufacturer's specified torque.
8. Remove the tool.
9. Attach selector lever on the selector shaft and tighten to manufacturer's recommended torque.



## Safety Warnings - please read

- Wear eye and hand protection when using this tool kit.
- Always carefully clean the tool components after each use.
- Keep the tool components safe and tidy.
- Do not use the kit for any purpose other than for which it is designed.



### Safety First. Be Protected.

Our products are designed to be used correctly and with care for the purpose for which they are intended. No liability is accepted by the Tool Connection for incorrect use of any of our products, and the Tool Connection cannot be held responsible for any damage to personnel, property or equipment when using the tools. Incorrect use will also invalidate the warranty.

If applicable, the applications database and any instructional information provided has been designed to offer general guidance for a particular tool's use and while all attention is given to the accuracy of the data no project should be attempted without referring first to the manufacturer's technical documentation (workshop or instruction manual) or the use of a recognised authority such as Autodata.

It is our policy to continually improve our products and thus we reserve the right to alter specifications and components without prior notice. It is the responsibility of the user to ensure the suitability of the tools and information prior to their use.



6485\_Instructions\_V2



[www.lasertools.co.uk](http://www.lasertools.co.uk)

#### Guarantee

Distributed by The Tool Connection Ltd  
Kington Road, Southam, Warwickshire CV47 0DR  
T +44 (0) 1926 815000 F +44 (0) 1926 815088  
info@toolconnection.co.uk [www.toolconnection.co.uk](http://www.toolconnection.co.uk)

If this product fails through faulty materials or workmanship, contact our service department direct on: +44 (0) 1926 818186. Normal wear and tear are excluded as are consumable items and abuse.



[www.lasertools.co.uk](http://www.lasertools.co.uk)