

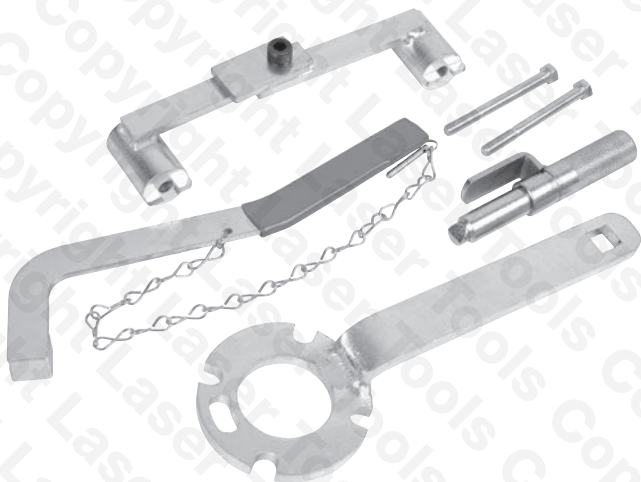
LASER[®]

Part No. 6558

Cambelt Tool Kit

for Renault, Volvo Petrol Twin Cam

Instructions



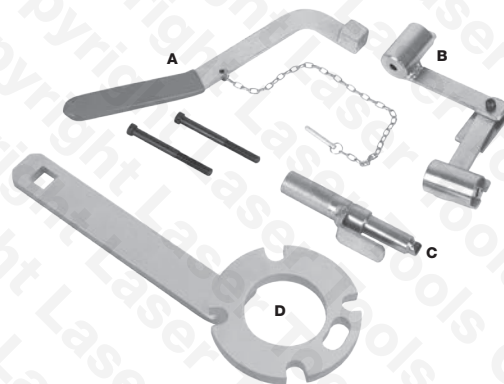
www.lasertools.co.uk

Introduction

This kit provides the tools to set the camshafts, and crankshaft when replacing the drive belt. The kit also includes a front pulley holding tool which is essential when undoing the very tight front pulley bolt fitted to these engines.

- For Renault, Volvo with petrol twin cam engines.
- Applications include the Renault 2.0 and 2.4 16v petrol engines (1996- to 2001) plus Volvo 1.6/1.8/2.0/2.3/2.4 petrol engines from 1997-2010.
- Suitable for use with the following replacement cambelt kits: INA 530006310, Contitech CT979K1, Gates K015509XS.

Components



Ref.	Comp. Code	OEM Ref.	Description
A	C114	Mot.1348	Tensioner Lever
B	C116	Mot.1337	Camshaft Setting Tool with Bolts
C	C110	Mot.1340	Crankshaft Setting Pin
D	C528	999.5433	Crankshaft Pulley Holding Tool

Because this kit only contains those tools deemed as essential, some users may need to consider additional tooling such as generic pulley/sprocket holding tools or DTI gauges. Laser tools do have such tools listed separately.

Additional tool available:

Laser Camshaft Sprocket Holding Tool - Part No. 2869

Applications - Timing Belts

INA	Contitech	Gates
INA 531 0063 10	CT 979K1	K015509X8
INA 531 0044 10		
INA 531 0467 10		

Applications

Make, Model, Year			Engine Codes		
Renault	Laguna	1995 - 2001	2.0	2.0	2.4
	Safrane	1996 - 2000	N7Q 700 N7Q 704	B 4204 S	B 5244 S
Volvo	C70	1997 - 2005	N7Q 704	B 4204 S2	B 5244 S2
	S40	1997 - 2003	2.5	B 4204 T	B 5244 SG
	S60	2000 - 2010	N7Q 710	B 4204 T2	B 5244 SG3
	S70	1996 - 2000	N7Q 711	B 4204 T3	B 5244 T
	S80	1998 - 2006	1.6	B 4204 T5	B 5244 T3
	V40	1995 - 2004	B 4164 S	B 5204 T	B 5244 T7
	V70	1997 - 2005	B 4164 S2	B 5204 T2	2.5
	XC70	1990 - 2007	1.8	B 5204 T3	B 5254 S
	XC90	2002 -	B 4184 S	B 5204 T4	B 5254 T
			B 4184 S2	B 5204 T5	B 5254 T2
			B 4184 S3	2.3	B 5254 T4
			B 4184 S9	B 5234 T	
			1.9	B 5234 T3	
			B4194 T2	B 5234 T4	
				B 5234 T7	
				B 5234 T9	

Always refer to the website for most up to date applications:
www.lasertools.co.uk/product/6558

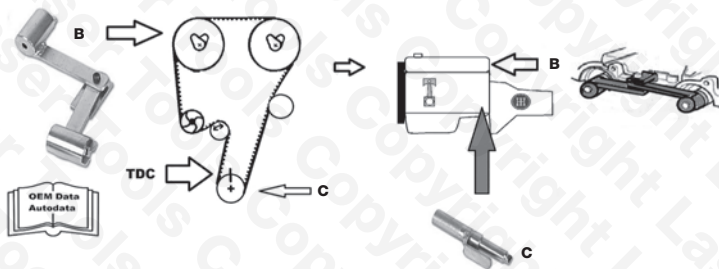
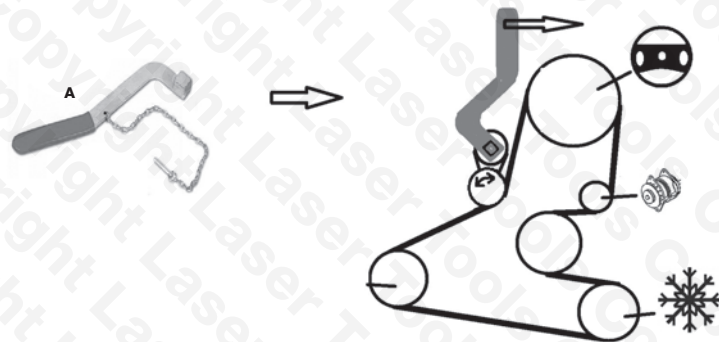
Instructions

The following instructions are for guidance only. Please refer to OEM derived data such as the vehicle manufacturers' own data or Autodata.

The use of this tool is purely down to the user's discretion and The Tool Connection Ltd. cannot be held responsible for any damage caused what so ever.



Instructions



Our products are designed to be used correctly and with care for the purpose for which they are intended. No liability is accepted by the Tool Connection for incorrect use of any of our products, and the Tool Connection cannot be held responsible for any damage to personnel, property or equipment when using the tools. Incorrect use will also invalidate the warranty.

If applicable, the applications database and any instructional information provided has been designed to offer general guidance for a particular tool's use and while all attention is given to the accuracy of the data no project should be attempted without referring first to the manufacturer's technical documentation (workshop or instruction manual) or the use of a recognised authority such as Autodata.

It is our policy to continually improve our products and thus we reserve the right to alter specifications and components without prior notice. It is the responsibility of the user to ensure the suitability of the tools and information prior to their use.



Safety First. Be Protected.



www.lasertools.co.uk

6558_Instructions_V3



Distributed by The Tool Connection Ltd
Kington Road, Southam, Warwickshire CV47 0DR
T +44 (0) 1926 815000 F +44 (0) 1926 815888
info@toolconnection.co.uk www.toolconnection.co.uk

Guarantee

If this product fails through faulty materials or workmanship, contact our service department direct on: **+44 (0) 1926 818186**. Normal wear and tear are excluded as are consumable items and abuse.

www.lasertools.co.uk