

Our products are designed to be used correctly and with care for the purpose for which they are intended. No liability is accepted by the Tool Connection for incorrect use of any of our products, and the Tool Connection cannot be held responsible for any damage to personnel, property or equipment when using the tools. Incorrect use will also invalidate the warranty.

If applicable, the applications database and any instructional information provided has been designed to offer general guidance for a particular tool's use and while all attention is given to the accuracy of the data no project should be attempted without referring first to the manufacturer's technical documentation (workshop or instruction manual) or the use of a recognised authority such as Autodata.

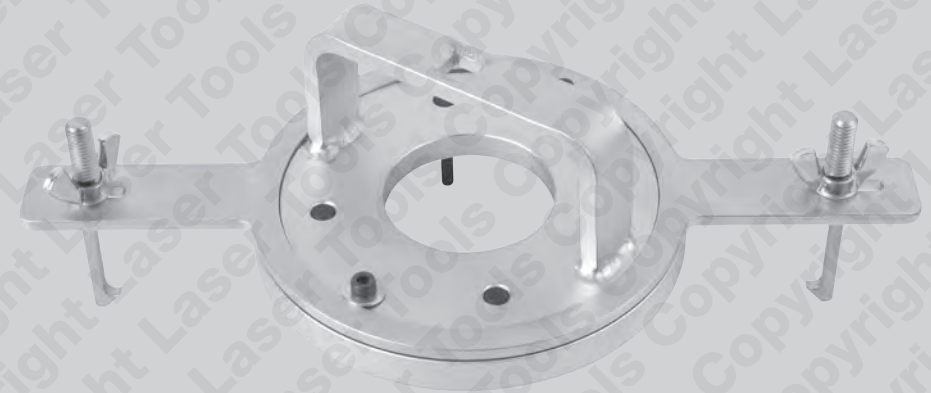
It is our policy to continually improve our products and thus we reserve the right to alter specifications and components without prior notice. It is the responsibility of the user to ensure the suitability of the tools and information prior to their use.

# LASER®

6661

## DCT Clutch Tool

Ford/Volvo



### Guarantee

If this product fails through faulty materials or workmanship, contact our service department direct on: **+44 (0) 1926 818186**. Normal wear and tear are excluded as are consumable items and abuse.

**TOOL CONNECTION**  
The Complete Connection

Distributed by The Tool Connection Ltd

Kineton Road, Southam, Warwickshire CV47 0DR  
T +44 (0) 1926 815000 F +44 (0) 1926 815888  
info@toolconnection.co.uk [www.toolconnection.co.uk](http://www.toolconnection.co.uk)



- For 6 speed DCT - Dual Clutch Transmission.
- Application: Volvo C30, C70 (06>) S40 (04>) S60 (11>) S80 (07>) S80L, V40 (13>) V40 Cross Country, V50, V60, V70 (08>) XC60, Ford Focus (04>) C-Max, S-Max, Galaxy, Mondeo (07>) Kuga (13>), also Dodge Avenger and Journey plus Chrysler Sebring.
- Equivalent to OEM Volvo 9997435 and Ford 308-763.

## DCT Clutch Tool - Ford/Volvo

The DCT (Dual Clutch Transmission) clutch tool is designed to allow the removal of the clutch housing complete with clutch plates from the Getrag 6 speed 6DCT450 automatic transmission.

- Equivalent to OEM tools Ford 308-763, Volvo 9997435
- Applications include Chrysler, Dodge, Ford and Volvo
- Specifically for Getrag Dual Clutch Transmission type 6DTC450

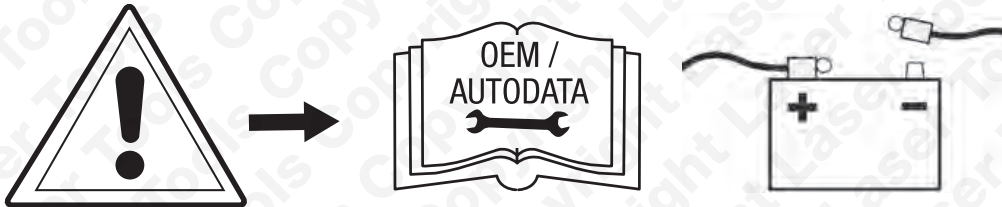
## Applications

Chrysler Sebring  
Dodge Avenger and Journey  
Ford Focus from 2004, Ford C-Max from 2007, Ford Galaxy from 2007,  
Ford Mondeo from 2007, Ford Kuga from 2007  
Volvo C30 from 2006, C70 from 2006, S40 from 2004, S80 from 2007, V40 from 2013, V50 from 2008, V60 from 2008, V70 from 2008, XC 60.



The following instructions are for guidance only. Please refer to OEM derived data such as the vehicles manufactures own data or Autodata.

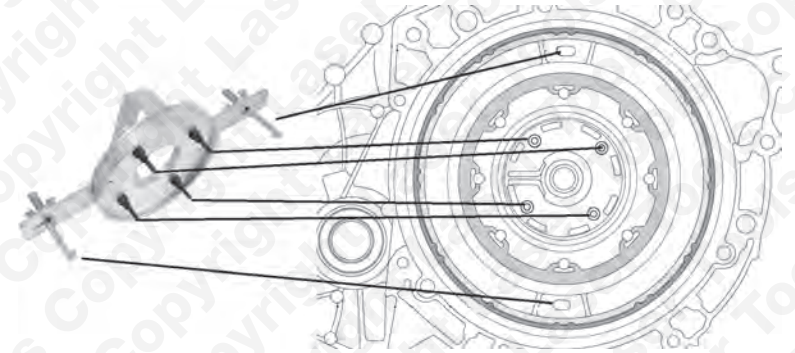
The use of this clutch tool is purely down to the user's discretion and The Tool Connection Ltd cannot be held responsible for any damage caused what so ever.



Remove the transmission from the vehicle as described by the vehicle manufacturer.

## Basic Instructions For Use

1. With the transmission removed align the 4 holes in the clutch housing and clutch plate internals.
2. Insert the tool so that the 4 alignment pins hold the clutch housing and clutch internal in alignment. At the same time align the hooks with the outer slots on the clutch housing.
3. Once installed evenly tighten the hook screws till the tool is secured.



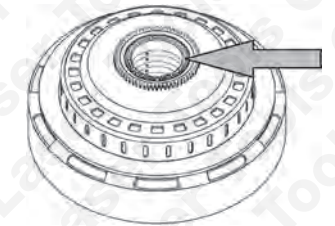
4. With tool in place turn the handle sharply by ¼ of a turn clockwise until it locks to the internal stop.



5. Using the handle now turn the a ¼ turn anti-clockwise to release the assembly



6. When the clutch housing and drum assembly has been release turn the assembly anti-clockwise approximately 8 turns then lift the assembly clear of the gear box. Remove the tool.



N.B: the clutch housing assembly support bearing usually remains in the drum assembly. Ensure it is located and stored safely for reuse.