

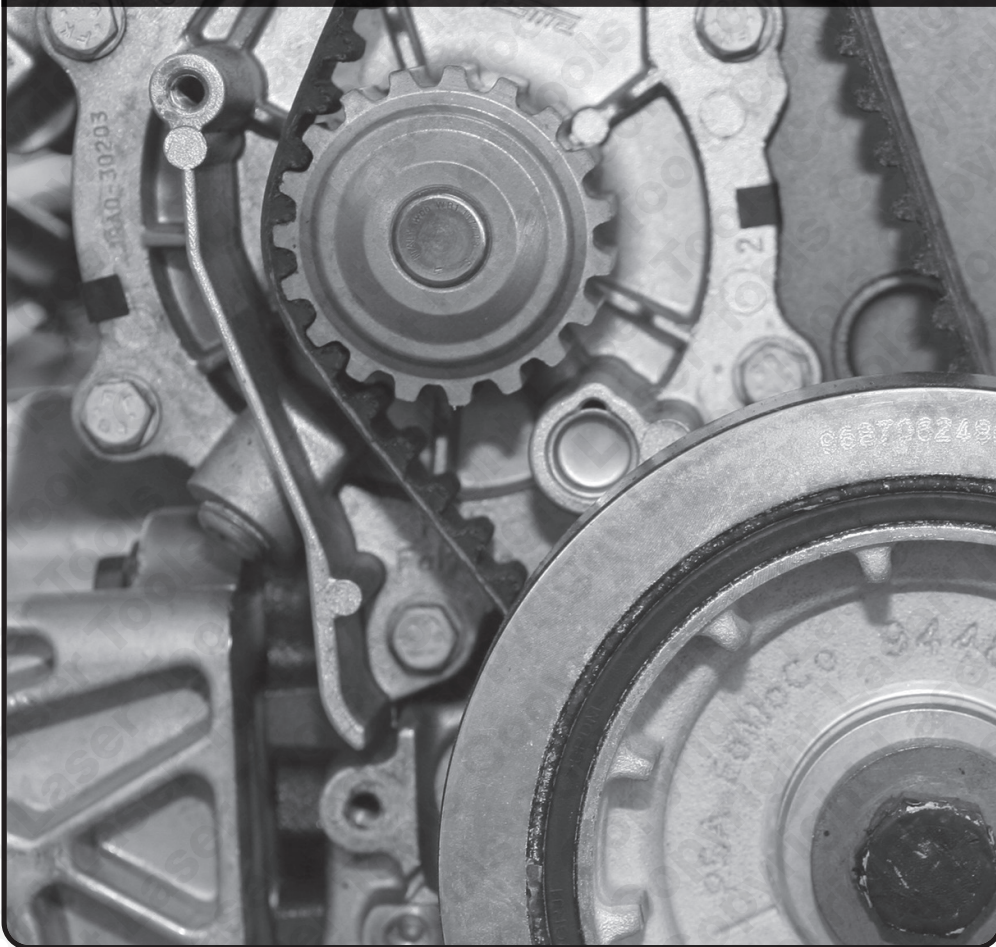
LASER[®]

Part No. 6809

Instructions

Engine Timing Tool Kit

for VW Group 1.4, 1.6, 2.0L TDi CR



www.lasertools.co.uk

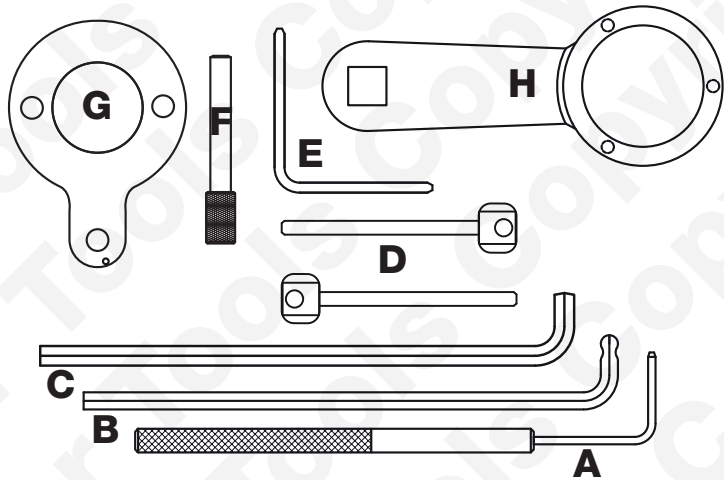
Introduction

A comprehensive kit for removal and fitting of the camshaft drive belt on the popular 1.4, 1.6 and 2.0L TDi CR diesel engines found across the VW Group range from 2012 onwards.

- Applications include: Audi, Seat, Skoda & Volkswagen, fitted with 1.4, 1.6, 2.0L common rail diesel engines (from 2012).
- Tools equivalent to OEM: T10265, T10264, T10492, T10409, T10060A, T10051 & T10490.
- Offers 1.4, 1.6 & 2.0L TDi CRD coverage from 2012 onwards.
- Includes tooling for timing the camshaft gears. Supplied in a metal case.
- Crankshaft Timing Tool and Locking Pin (C695) EU Registered Design.
- The engines covered utilise a belt with transfer gears in the head. This kit includes the pins required for timing the camshafts in the head.
- Includes the tools required to work on the latest versions of the engines listed. Due to changes in the OEM recommended tooling for these engines this kit supersedes and replaces the Laser 6286 kit.

Note: for pre 2012 engine codes please see **Laser Part No. 5130**

Components



Ref.	Code	OEM Ref.	Description
A	C451	T10265	2.5mm Cambelt Tensioner Locking Tool
B	C450	T10264	6mm Ball End Hex Key
C	C773	T10409	8mm Hex Key
D	C768	T10492	Fuel Pump Locking and Camshaft Alignment Pins x2
E	C283	T10060A	Auxiliary Drive Tensioner Pin
F	C101	T10490	Crankshaft Timing Tool and Locking Pin (EU Registered)
G	C695		
H	C503	T10051	Sprocket Holding Tool for High Pressure Fuel Pump (1/2"D)

Applications

Manufacturer	Model	Range	Year
Audi	A1/Sportback	(8XF/8XK)	2015 - 2018
	A3/Sportsback/Cabrio	(8VA/8V1/8V7/8VS/8VK/8VF/8VE/8VM)	2012 - 2020
	A4	(8K2/8K5/8KH/8W2/8W5/8WH/8WC/8WD/8WJ)	2007 - on
	A5 I/II	(8F7/8T3/8TA/F57/F53/F5A/F5E/F5P/F5A)	2013 - on
	A6	(4G/4K)	2011 - on
	A7	(4K)	2018 - on
	Q2	(GAB)	2016 - 2020
	Q3	(8UG/F3B/F3N)	2015 - on
	Q5	(8RB/FYB)	2013 - 2020
	TT	(FV)	2014 - 2018
Seat	Alhambra	(711)	2015 - on
	Arona	(KJ7)	2017 - on
	Ateca	(KH7)	2016 - 2020
	Ibiza	(6P/KJ1)	2015 - on
	Leon/ST	(5F1/5F5/5F8)	2012 - 2020
	Tarraco	(KN2)	2019 - on
Skoda	Toledo	(KG3)	2015 - 2019
	Fabia III	(NJ)	2014 - 2018
	Kamii	(NW4)	2019 - on
	Karoq	(NU7)	2017 - on
	Kodii	(NS7/NV7)	2017 - on
	Octavia III	(5E3/SE5)	2013 - 2020
	Rapid/Spaceback	(NH3/NH1)	2015 - 2018
	Scala	(NW1)	2019 - on
	Superb III	(3V3/3V5)	2015 - on
Volkswagen	Yeti/Outdoor	(5L6/5L7)	2013 - 2017
	Amarok	(2Hx/S1B)	2010 - 2016
	Arteon	(3H7)	2017 - 2020
	Beetle	(5C1,5C2,5C7,5C8)	2011 - 2018
	Caddy/Caddy Maxi	(SAx)	2015 - 2021
	CC	(358)	2015 - 2017
	Crafter	(SY/SZ)	2017 - on
	Golf VI Cabrio	(517) (11-16)	2015 - 2016
	Golf SV/Sportsvan	(AM1,AN1)	2014 - on
	Golf VII/Estate	(5G1,BQ1, BA5, BV5)	2012 - 2020
	Jetta	(163)	2014 - 2018
	Passat/Alltrack	(3G2/3G5/CB2/CB5)	2014 - on
	Polo	(6C1/AW1)	2014 - on
	Scirocco	(138)	2014 - 2018
	Sharan	(7N2)	2015 - on
	T-Cross	(C11)	2019 - on
	Tiguan	(5N1/5N2)	2015 - 2016
	Tiguan/Allspace	(AD1/BT1/BW2)	2016 - on
	Touran	(5T1)	2015 - on
	Transporter T6	(SFx/SGx)	2015 - on
	T-Roc	(A11)	2017 - on

Applications

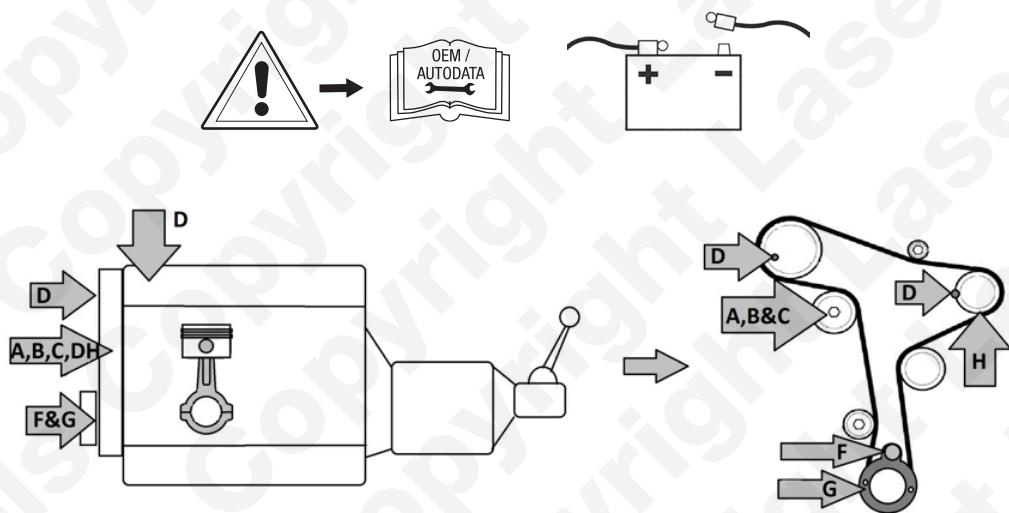
Engine Codes					
1.4 TDi CR	2.0 TDi CR				
CUSA	CDBA	CSUB	CXHA	DEJB	DFS A
CUSB	CDCA	CSUD	CXHB	DESA	DFS B
CUTA	CKFB	CSUE	CYKA	DETA	DFS C
1.6 TDi CR	CKFC	CUAA	CYKB	DETB	DFS D
CLHA	CNEA	CUNA	CYKC	DEUA	DFS E
CLHB	CNFA	CUUA	CZJA	DEUB	DFS F
CLHC	CNFB	CUUB	DASA	DEUC	DFTA
CRKA	CNHA	CUUC	DASB	DEZB	DFTB
CRKB	CNHC	CUUD	DAUA	DEZD	DFTC
CXMA	CRBC	CUUE	DAUB	DEZE	DFUA
CXXA	CRLB	CUUF	DAVA	DEZF	DGCA
CXXB	CRLD	CUPA	DAWA	DFBA	DJGA
DBKA	CRBD	CUVA	DAWB	DFCA	DLTA
DCXA	CRFA	CUVB	DBGA	DFEA	DLTC
DCZA	CRFC	CUVC	DBGB	DFEB	DLUB
DDYA	CRLB	CUVD	DBGC	DFFA	DTRD
DDYB	CRLC	CUVE	DCYA	DFGA	DTTA
DGDA	CRMB	CUWA	DCYB	DFGB	DTTC
DGDB	CRVA	CXEB	DDAA	DFGC	
DGTA	CRVC	CXEC	DDCA	DFHA	
DGTC	CRUA	CXFA	DDCB	DFLA	
DGTD	CSHA	CXGA	DDDA	DFLD	
DGTE	CSUA	CXGB	DEJA	DFMA	

Please refer to www.lasertools.co.uk/product/6809 to check the most up to date product applications.

Instructions

The following instructions are for guidance only. Please refer to OEM derived data such as the vehicle manufacturers' own data or Autodata.

The use of this engine timing tool kit is purely down to the user's discretion and The Tool Connection Ltd. cannot be held responsible for any damage caused whatsoever.

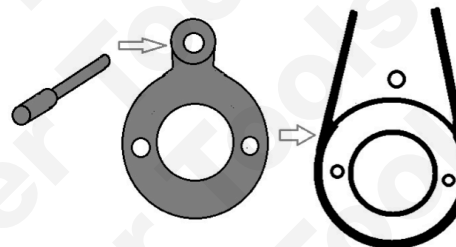


Note: Use component E to lock the auxiliary belt tensioner in its fully retracted position.

Instructions

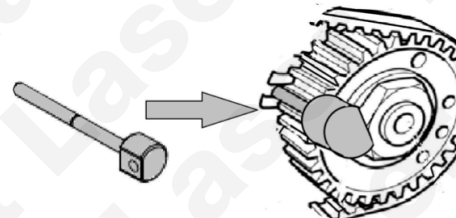
Component F and G:

Align the timing marks according to the manufacturer's instructions and fit the crankshaft alignment tools **F** and **G** as shown.



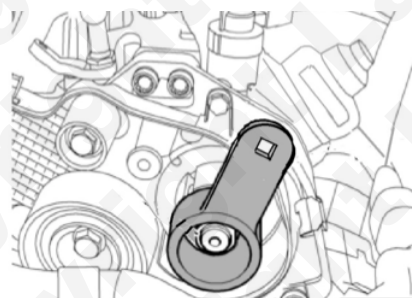
Component D:

Set the fuel pump sprocket position using one of **D** as shown.



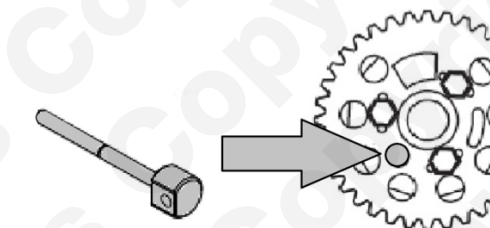
Component H:

Use component **H** to hold the fuel pump pulley if removal is required.

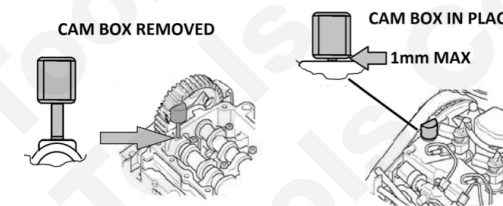


Component D:

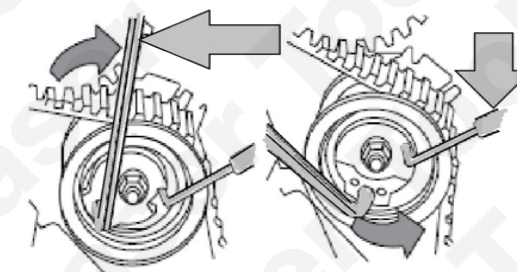
Set the rear camshaft position using component **D** to lock the camshaft sprocket as shown.



Set the front camshaft position from the top of the engine as shown using component **D**. This can be done with the cam cover in place or removed.



Use components **A** and **B** or **C** to set the belt tensioner position.



Safety Warnings - please read

- Disconnect the battery earth leads (check radio code is available).
- Remove spark or glow plugs to make the engine turn easier.
- Do not use cleaning fluids on belts, sprockets or rollers.
- Always make a note of the route of the auxiliary drive belt before removal.
- Turn the engine in the normal direction (clockwise unless stated otherwise).
- Do not turn the camshaft, crankshaft or diesel injection pump once the timing chain has been removed (unless specifically stated).
- Do not use the timing chain to lock the engine when slackening or tightening crankshaft pulley bolts.
- Do not turn the crankshaft or camshaft when the timing belt/chain has been removed.
- Mark the direction of the chain before removing.
- It is always recommended to turn the engine slowly, by hand and to re-check the camshaft and crankshaft timing positions.
- Crankshafts and camshafts may only be turned with the chain drive mechanism fully installed.
- Do not turn crankshaft via camshaft or other gears.
- Check the diesel injection pump timing after replacing the chain.
- Observe all tightening torques.
- Always refer to the vehicle manufacturers' service manual or a suitable proprietary instruction book.
- Incorrect or out of phase engine timing can result in damage to the valves.

Our products are designed to be used correctly and with care for the purpose for which they are intended. No liability is accepted by the Tool Connection for incorrect use of any of our products, and the Tool Connection cannot be held responsible for any damage to personnel, property or equipment when using the tools. Incorrect use will also invalidate the warranty.

If applicable, the applications database and any instructional information provided has been designed to offer general guidance for a particular tool's use and while all attention is given to the accuracy of the data no project should be attempted without referring first to the manufacturer's technical documentation (workshop or instruction manual) or the use of a recognised authority such as Autodata.

It is our policy to continually improve our products and thus we reserve the right to alter specifications and components without prior notice. It is the responsibility of the user to ensure the suitability of the tools and information prior to their use.



6809_Instructions_V10



www.lasertools.co.uk



Distributed by The Tool Connection Ltd
Kington Road, Southam, Warwickshire CV47 0DR
T +44 (0) 1926 815000 F +44 (0) 1926 815888
info@toolconnection.co.uk www.toolconnection.co.uk

Guarantee

If this product fails through faulty materials or workmanship, contact our service department direct on: **+44 (0) 1926 818186**. Normal wear and tear are excluded as are consumable items and abuse.

www.lasertools.co.uk