

Our products are designed to be used correctly and with care for the purpose for which they are intended. No liability is accepted by the Tool Connection for incorrect use of any of our products, and the Tool Connection cannot be held responsible for any damage to personnel, property or equipment when using the tools. Incorrect use will also invalidate the warranty.

If applicable, the applications database and any instructional information provided has been designed to offer general guidance for a particular tool's use and while all attention is given to the accuracy of the data no project should be attempted without referring first to the manufacturer's technical documentation (workshop or instruction manual) or the use of a recognised authority such as Autodata.

It is our policy to continually improve our products and thus we reserve the right to alter specifications and components without prior notice. It is the responsibility of the user to ensure the suitability of the tools and information prior to their use.

6856
6865

LASER[®]

AdBlue[®] Filling Funnel Straight/Angled

Designed to screw directly on to the AdBlue[®] tank filler neck where the tank is fitted with a vertically or angled accessed filler (boot floors, under bonnet areas etc.).

The funnel has a manually operated anti-spill valve which is operated by lifting the valve inside the funnel.

6856

6865



6865_AdBlue_Funnel_Inst_v5

Guarantee

If this product fails through faulty materials or workmanship, contact our service department direct on: +44 (0) 1926 818186. Normal wear and tear are excluded as are consumable items and abuse.



- 1100ml.
- Features cover to prevent dust and dirt.
- Transparent level scale.
- Air breather.
- **NOTE: Shut manual valve when tank is full to prevent spillage.**



Distributed by The Tool Connection Ltd

Kington Road, Southam, Warwickshire CV47 0DR
T +44 (0) 1926 815000 F +44 (0) 1926 815888
info@toolconnection.co.uk www.toolconnection.co.uk

www.lasertools.co.uk

www.lasertools.co.uk

AdBlue® Filling Funnel

The modern diesel engine has to meet ever increasingly stringent emission regulations and with the adoption of the Euro 6 regulations the maximum permissible NOx emissions from a modern diesel has been reduced to a level where the use of additional exhaust clean up systems is required. AdBlue is part of this “clean up” system. AdBlue® is not a fuel additive, it is stored in a separate tank and injected into the exhaust to help the Selective Catalytic Reduction system convert the noxious gas NOx into Nitrogen and water vapour. AdBlue® was first seen in use on trucks and lorries but now with the advent of Euro 6 its use has extended across the car and LGV markets as well.

So far so good but! AdBlue® is a solution of 67.5% water and 32.5% urea and as such it is corrosive. While not considered a hazardous substance contact with AdBlue® should be kept to a minimum and contact with clothing is not recommended.

Many Motor manufacturers have put the AdBlue® fillers in the boot or under the bonnet and some alongside the diesel fuel filler.

The AdBlue® tank is easily identified because they have a blue screw on cap clearly marked AdBlue®. All AdBlue® filler necks use the same thread size and the Laser AdBlue® funnels are equipped with this universal thread size.

6856 Straight AdBlue® funnel –

Designed to screw directly on to the AdBlue® tank filler neck where the tank is fitted with a vertically accessed filler (Boot floors, under bonnet areas etc.).

The funnel has a manually operated anti-spill valve which is operated by lifting the valve inside the funnel.

- For safe transfer of AdBlue® from storage containers to the vehicle tank.
- Equipped with manually operated anti-spill valve.
- 1100ml transparent funnel with scale.
- Equipped with a lid to keep out dirt and debris when not in use.
- Air breather pipe to allow air out of the tank, prevent splashing caused by bubbling and help prevent over filling.
- For angled AdBlue® filler necks use Laser 6865 angled AdBlue® funnel.

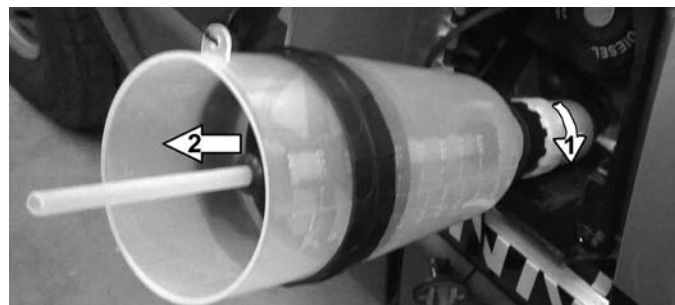
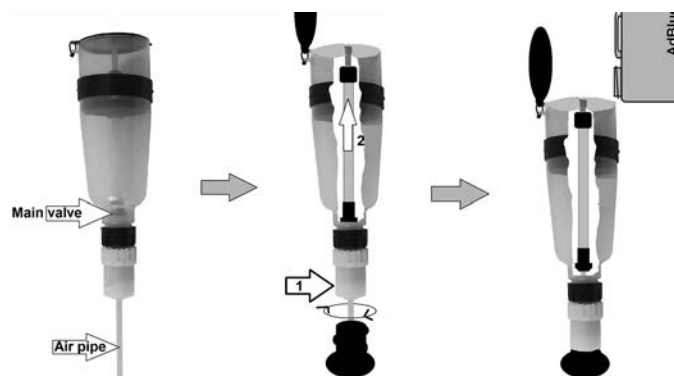
6865 Angled AdBlue funnel –

Designed to screw directly on to the AdBlue® tank filler neck Where the tank is fitted with an angled accessed filler (Boot floors, under bonnet areas etc.).

The funnel has a manually operated anti-spill valve which is operated by lifting the valve inside the funnel.

- For safe transfer of AdBlue® from storage containers to the vehicle tank.
- Equipped with manually operated anti-spill valve.
- 1100ml transparent funnel with scale.
- Equipped with a lid to keep out dirt and debris when not in use.
- Air breather pipe to allow air out of the tank and prevent splashing caused by bubbling.
- For vertical AdBlue filler necks use Laser 6856 straight AdBlue funnel.

Instructions - 6856



Instructions - 6865

