

Our products are designed to be used correctly and with care for the purpose for which they are intended. No liability is accepted by the Tool Connection for incorrect use of any of our products, and the Tool Connection cannot be held responsible for any damage to personnel, property or equipment when using the tools. Incorrect use will also invalidate the warranty.

If applicable, the applications database and any instructional information provided has been designed to offer general guidance for a particular tool's use and while all attention is given to the accuracy of the data no project should be attempted without referring first to the manufacturer's technical documentation (workshop or instruction manual) or the use of a recognised authority such as Autodata.

It is our policy to continually improve our products and thus we reserve the right to alter specifications and components without prior notice. It is the responsibility of the user to ensure the suitability of the tools and information prior to their use.

28 April 2017 9:28 AM

### Guarantee

This item contains consumable elements and are NOT covered by the Tool Connection Guarantee. For spares contact our service department direct on: +44 (0) 1926 818186.



Distributed by The Tool Connection Ltd

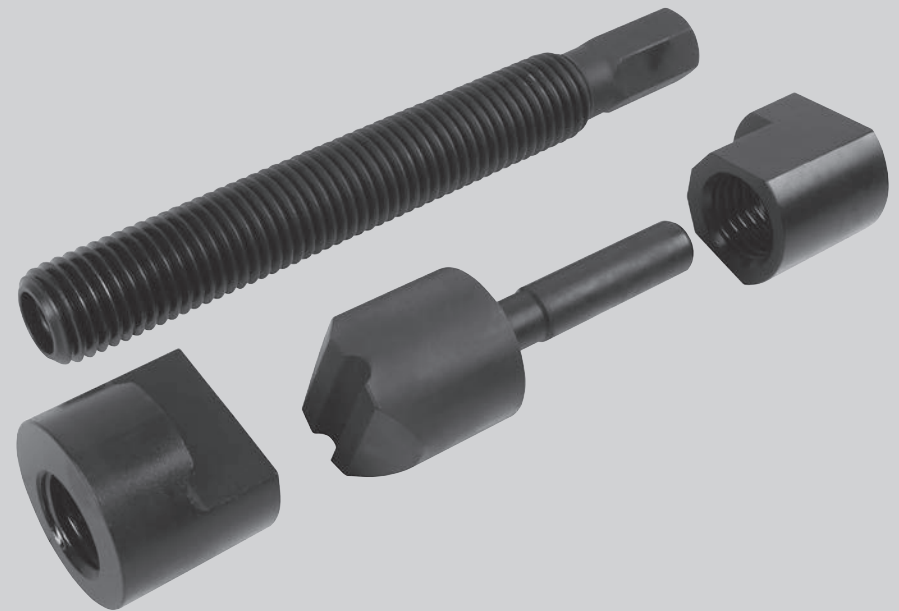
Kineton Road, Southam, Warwickshire CV47 0DR  
T +44 (0) 1926 815000 F +44 (0) 1926 815888  
info@toolconnection.co.uk www.toolconnection.co.uk



# LASER<sup>®</sup>

6914

## Twin Wheel Separator Set 4pc



- Designed for use on HGV and LCV vehicles with twin wheels.
- Hooks between the two rims to force the rims apart prior to removal.
- Always lubricate the force screw with Molybdenum Di-sulphide grease.
- Designed for use with a power gun or air impact tools.
- Saves time when removing corroded wheels.

[www.lasertools.co.uk](http://www.lasertools.co.uk)

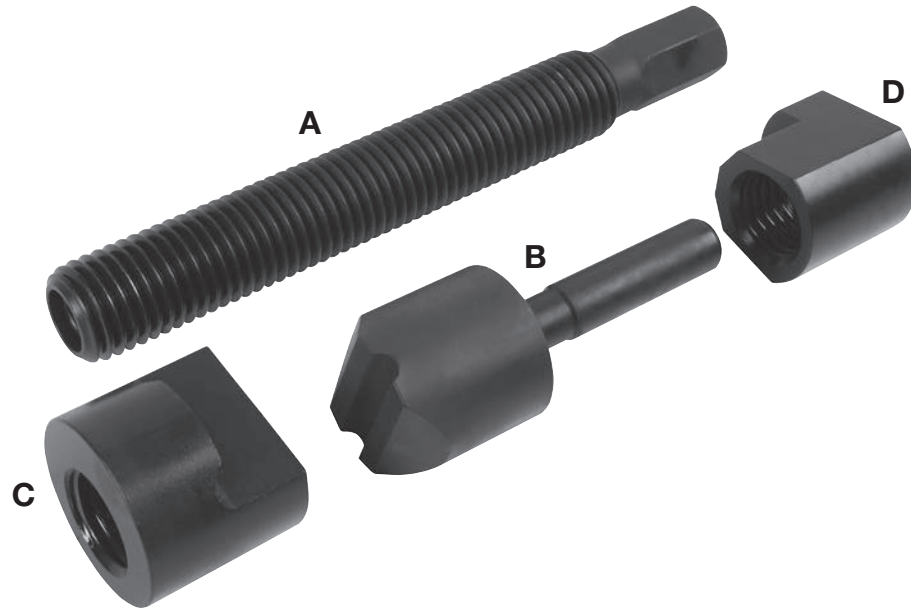
[www.lasertools.co.uk](http://www.lasertools.co.uk)

## Components

Developed to ease the removal of stuck or corroded twin wheel rims fitted to HGV and LGV vehicles.

The tools mount between the wheel rims and uses a power gun driven force screw to apply pressure between the stuck wheel rims to separate them.

N.B: always wear appropriate safety glasses, gloves and work boots when working with this set.



Ref	Description
A	Force Screw with inner bearing
B	Inner Rim Push Block
C	Outer Rim Pull Hook (Large)
D	Outer Rim Pull Hook (Small)

The following instructions are for guidance only. Please refer to OEM derived data such as the vehicles manufactures own data or Autodata. The use of this wheel separator tool is purely down to the user's discretion and The Tool Connection Ltd cannot be held responsible for any damage caused what so ever.



## Preparation

- Jack up and support the vehicle so that the wheels are free to rotate. Always use stands or ramps to ensure vehicle cannot fall.
- Loosen all wheel nuts.
- Leave 2 opposite loosened wheel nuts in place to ensure the wheels cannot drop off the drive flange unexpectedly. Remove the rest of the nuts.
- Lubricate the stuck/corroded wheel rims with penetrating release agent.
- Assemble the tool as shown.

## Instructions

- Lubricate the force screw with Molybdenum Di-sulphide grease and screw the appropriate outer rim hook **C** (large rims) or **D** (small rims) onto the force screw with the hook facing towards the Hex end of the force screw.
- Check the ball bearing is in the end of the force screw and insert the inner rim push block **(B)** into the ball end of the force screw.
- Insert the tool assembly as shown via one of the wheel spoke holes and hook the outer rim hook on to the outer rim and the inner rim hook on to the inner rim as shown.
- Using a suitable impact socket and impact air wrench wind the force screw in so that the hooks force the rims apart.
- **WARNING:** do not overtighten, if the rims do not separate, loosen the tool and reposition to try again.
- Overtightening can damage to the tool and the rims.

