

Our products are designed to be used correctly and with care for the purpose for which they are intended. No liability is accepted by the Tool Connection for incorrect use of any of our products, and the Tool Connection cannot be held responsible for any damage to personnel, property or equipment when using the tools. Incorrect use will also invalidate the warranty.

If applicable, the applications database and any instructional information provided has been designed to offer general guidance for a particular tool's use and while all attention is given to the accuracy of the data no project should be attempted without referring first to the manufacturer's technical documentation (workshop or instruction manual) or the use of a recognised authority such as Autodata.

It is our policy to continually improve our products and thus we reserve the right to alter specifications and components without prior notice. It is the responsibility of the user to ensure the suitability of the tools and information prior to their use.

7139\_Instructions\_V1

### Guarantee

If this product fails through faulty materials or workmanship, contact our service department direct on: **+44 (0) 1926 818186**. Normal wear and tear are excluded as are consumable items and abuse.



Distributed by The Tool Connection Ltd

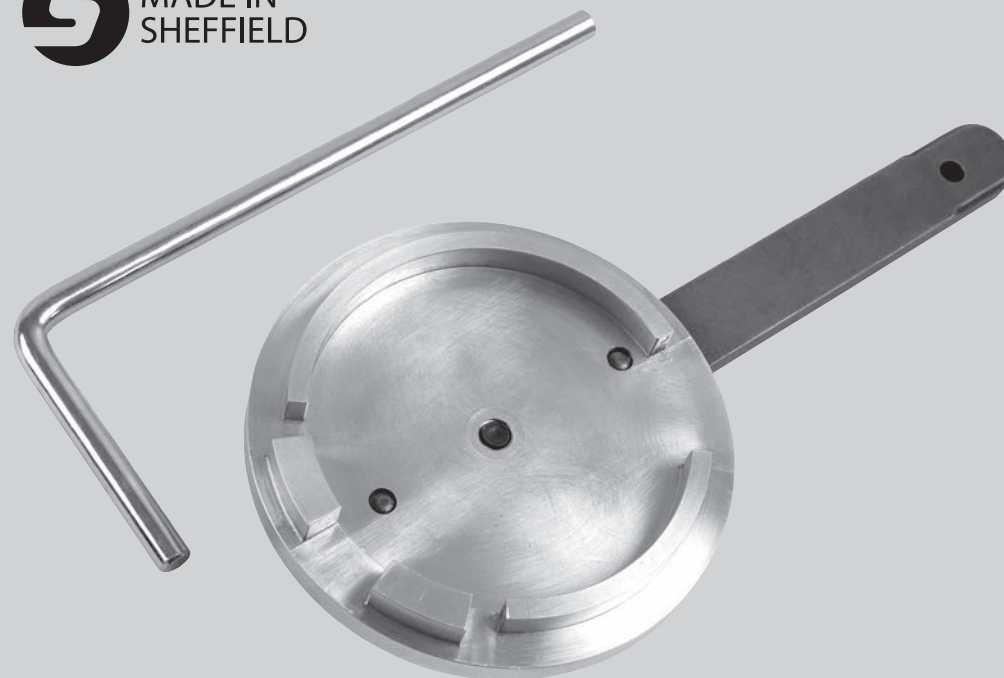
Kineton Road, Southam, Warwickshire CV47 0DR  
T +44 (0) 1926 815000 F +44 (0) 1926 815888  
info@toolconnection.co.uk [www.toolconnection.co.uk](http://www.toolconnection.co.uk)



# LASER<sup>®</sup>

7139

## DCT Clutch Claw Alignment Tool



- Ford applications: 6DCT 450 Gearbox found in: Focus, S-Max, C-Max, Kuga, Galaxy, Mondeo, Fiesta, Transit Connect
- Volvo applications: 6DCT 450 Gearbox found in: C30, S40, V50, C70, V70, S80, S60, V60.
- Equivalent to Ford, 308-757, 303-1059, Volvo OEM 999 7368.
- For Clutch Housing removal tool see Laser 6661.

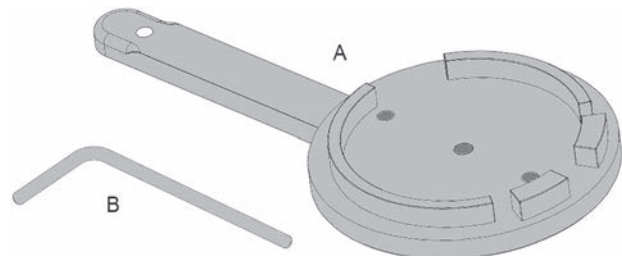
[www.lasertools.co.uk](http://www.lasertools.co.uk)

[www.lasertools.co.uk](http://www.lasertools.co.uk)

## Components

The Ford and Volvo 6 speed dual clutch transmission is unique in that it incorporates a dog-clutch between the engine flywheel and the clutch mechanism. This dog-clutch must be properly aligned before the gearbox and clutch mechanism can be mated to the engine.

The Laser 7139 provides the special alignment tool to enable the clutch mechanism to be correctly aligned with the engine. The 7139 is designed to be used as per OEM instructions.



Ref	OEM	Description
A	308-757, 999 7368	Dog-Clutch Alignment Tool
B	303-1059	Ford Crankshaft Alignment Tool

## Applications

Make	Model	Years	Types
Ford	Focus	2008-2017	6-Speed Automatic Transaxle (MPS6/6DCT450) 6-Speed Automatic Transaxle (6DCT450)
	S-MAX	2010-2017	
	C-MAX	2008-2017	
	Kuga	2010-2017	
	Galaxy	2010-2017	
	Mondeo	2008-2017	
	Fiesta	2010-2017	
	Ecosport	2012-2017	
Volvo	Transit Connect	2012-2017	6-Speed Automatic Transaxle (MPS6/6DCT450) 6-Speed Automatic Transaxle (6DCT450)
	C30	2008-2012	
	S40	2008-2012	
	V50	2008-2012	
	C70	2009-2013	
	V70	2009-2017	
	S80	2009-2017	
	S60	2010-2017	
	V60	2010-2017	
	V40	2009-2017	

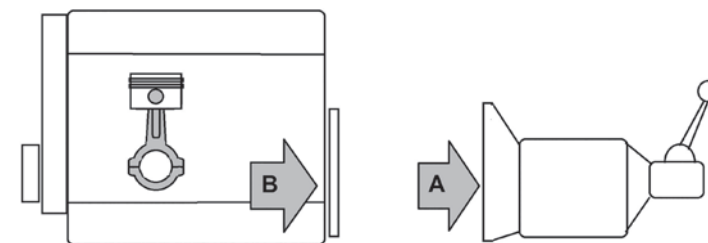
The following instructions are for guidance only. Please refer to OEM derived data such as the vehicles manufactures own data or Autodata.

The use of this Clutch Alignment Kit is purely down to the user's discretion and The Tool Connection Ltd. cannot be held responsible for any damage caused what so ever.



## Instructions

### Where Used:



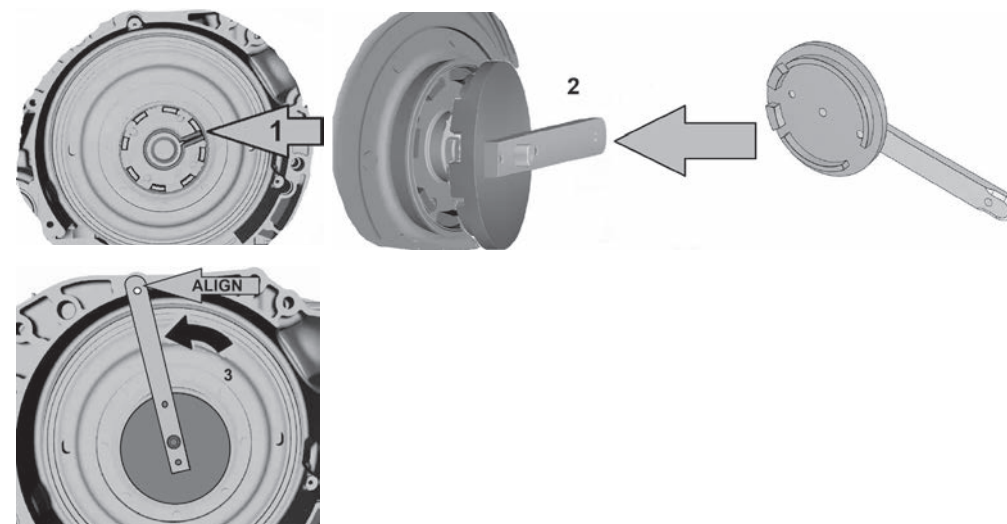
**Do not use timing tools to torque or loosen fixings against unless otherwise stated.**

**NOTE:** Always refer to OEM vehicle specific data for detailed instructions.

### Component A – Dog-Clutch alignment Tool:

Use to set the clutch side of the dog-clutch mechanism to its aligned position prior to fitting the transmission back into the vehicle.

The spring (1) and dog-clutch on the clutch side must first be identified and using component A (2) aligned as shown (3).



### Components B:

Used to align the crankshaft in its timed position so the flywheel side of the dog clutch is correctly aligned (**Ford only**).

