

Our products are designed to be used correctly and with care for the purpose for which they are intended. No liability is accepted by the Tool Connection for incorrect use of any of our products, and the Tool Connection cannot be held responsible for any damage to personnel, property or equipment when using the tools. Incorrect use will also invalidate the warranty.

If applicable, the applications database and any instructional information provided has been designed to offer general guidance for a particular tool's use and while all attention is given to the accuracy of the data no project should be attempted without referring first to the manufacturer's technical documentation (workshop or instruction manual) or the use of a recognised authority such as Autodata.

It is our policy to continually improve our products and thus we reserve the right to alter specifications and components without prior notice. It is the responsibility of the user to ensure the suitability of the tools and information prior to their use.

7299_Instructions_V2

Guarantee

If this product fails through faulty materials or workmanship, contact our service department direct on: **+44 (0) 1926 818186**. Normal wear and tear are excluded as are consumable items and abuse.



Distributed by The Tool Connection Ltd

Kineton Road, Southam, Warwickshire CV47 0DR
T +44 (0) 1926 815000 F +44 (0) 1926 815888
info@toolconnection.co.uk www.toolconnection.co.uk

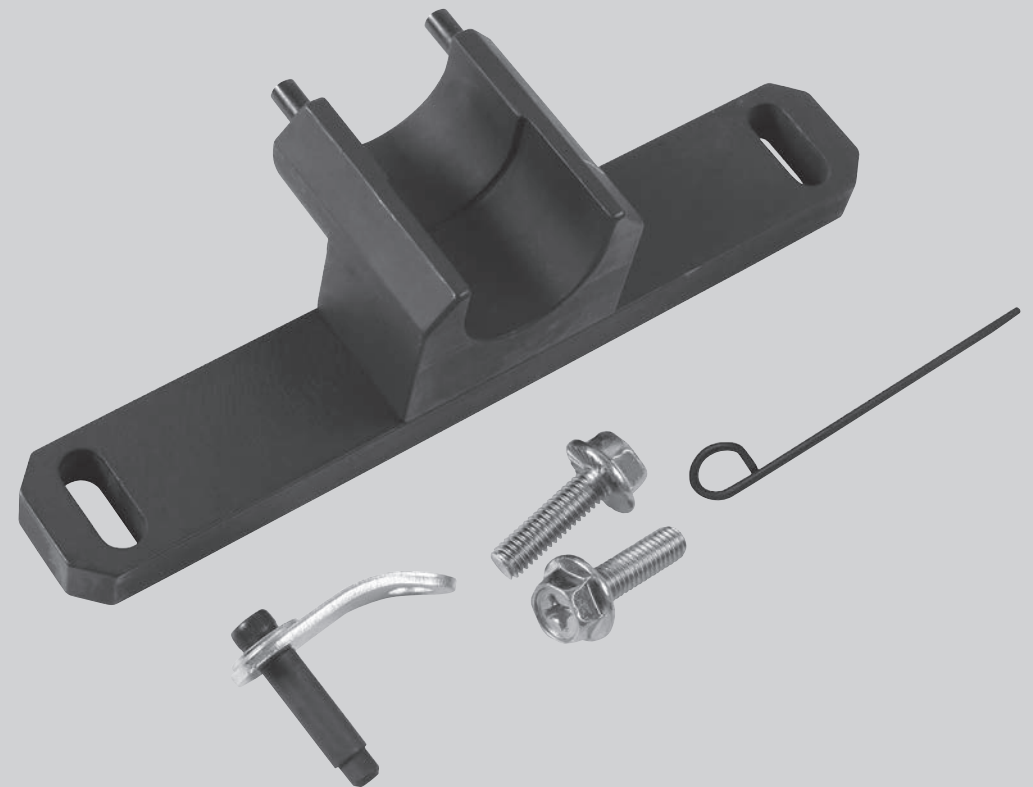


LASER[®]

7299

Balance Shaft & Oil Pump Alignment Kit

BMW - 1.6L, 2.0L Petrol



www.lasertools.co.uk

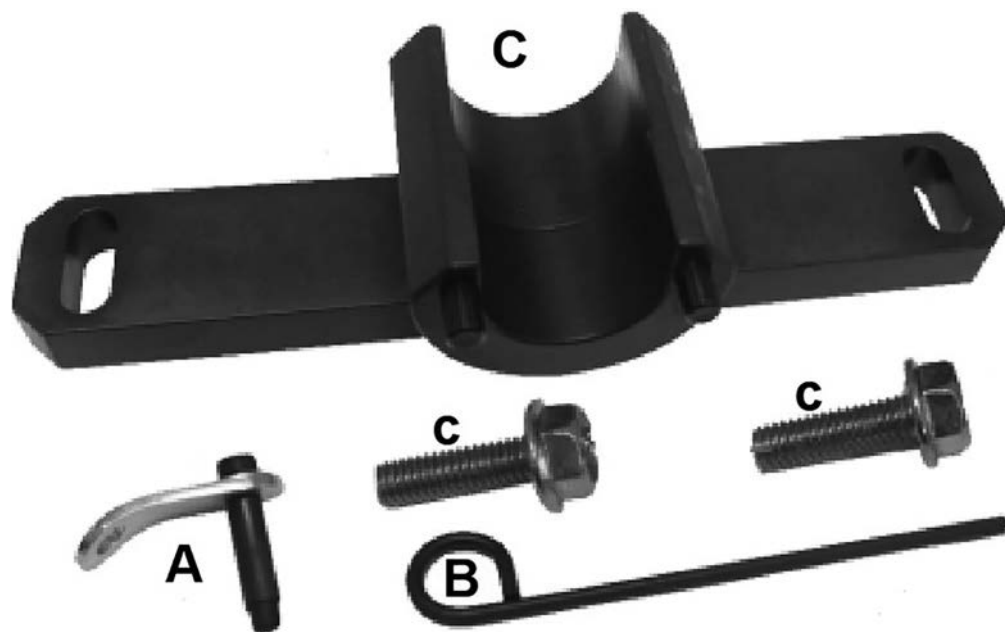
www.lasertools.co.uk

Description

Developed to align the balance shafts into the correct timed position and also to lock the drive sprocket for removal and replacement of the oil pump and balance shaft housing.

Laser 6173 Timing Kit can be used in conjunction with this kit.

Components



Ref	Code	OEM	Description
A	C869	2 212 825	Balancer shaft locking tool
B	C852	11 4 120	Tensioner retaining Pin
C	C870	2 318 117	Sprocket locking Tool

Component C

Locking Tool **C** (Fig. 4) must be correctly fitted into the sprocket and secured to the engine block, before attempting to loosen the securing bolt **No.1**. Install locking tool **C** and secure to cylinder block with bolts **No.2**. Remove the sprocket bolt **No.1**.

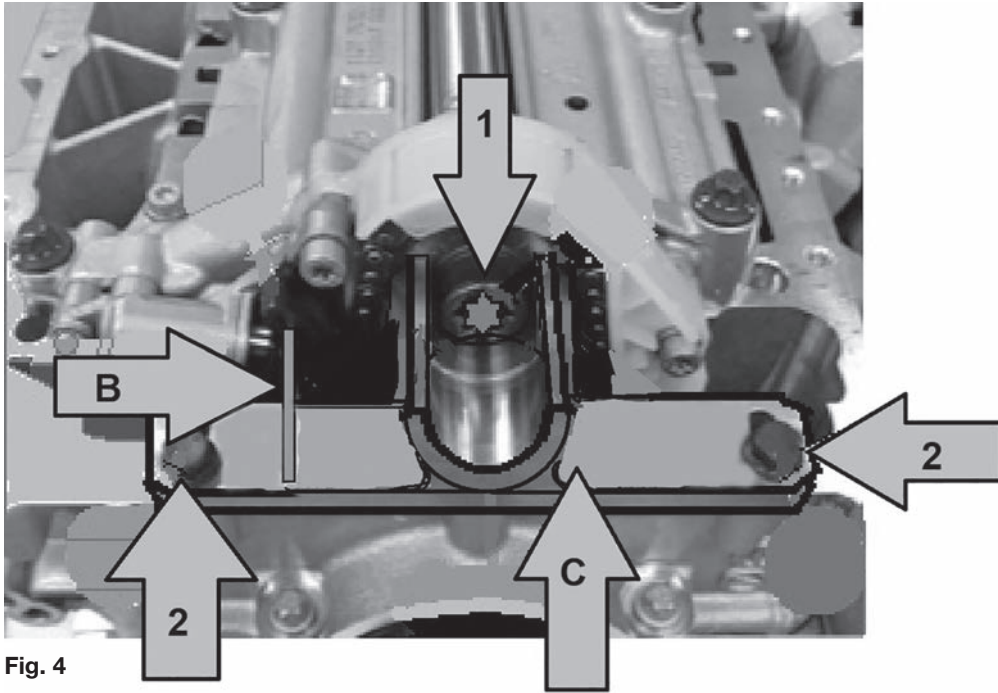


Fig. 4

Note

Renew Securing bolt **No.1**.

Applications

Make	Model	Variant	Years	Type
BMW	1 Series	(F20/21)	2012-2016	125i, 220i, 228i, 320i, 320i, 328i, 420i, 428i, xDrive, 528i, xDrive, 328i, 420i, 428i, 520i, sDrive16i, 18i, 20i, 20i, 28i xDrive28i
	2 Series	(F22/F23)	2014-2016	
	3 Series	(F30/31/F34)	2012-2016	
	4 Series	(F32/F33/F36)	2014-2016	
	5 Series	(F10/11)	2010-2017	
	X1	(E84)	2011-2015	
	X3	(F25)	2011-2017	
	X4	(F26)	2014-2017	
Z4	(E89)	2011-2017		

Engine Code

1.6	N20 B16A
2.0	N20 B20A, N20 B20B, N26 B20, N26 B20A, N20 B20B/U0, N20 B20, N20 B20O0

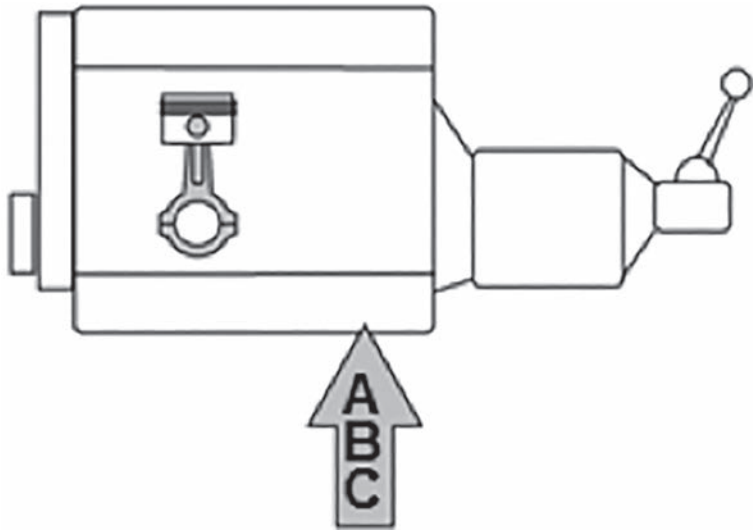
The following instructions are for guidance only. Please refer to OEM derived data such as the vehicles manufactures own data or Autodata. The use of this kit is purely down to the user's discretion and The Tool Connection Ltd cannot be held responsible for any damage caused what so ever.



Safety Warning - Please Read

- Personal protection and safety equipment must be used at all times
- Remove damaged tools from use
- Store in a dry place when not in use

Where Used



Preparation

N.B. Always turn the engine in normal direction of rotation.
Do not use timing tools to torque or loosen fixings against unless otherwise stated.

Removal and replacement of the timing chain, balance shafts, oil pump and oil pump drive chain will require sump removal.

Instructions

Component A

With the sump removed and the engine in its timed position. Remove blanking plug (Fig. 1) and install balance shaft locking pin and secure (Fig. 2). If component A cannot be fitted, the timing must be readjusted.

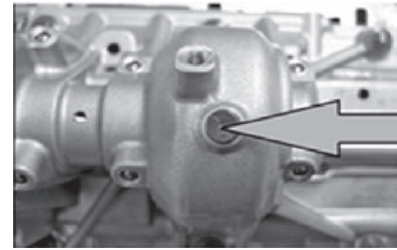


Fig. 1

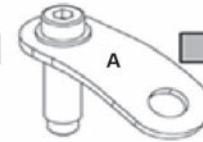


Fig. 2

Component B

Push back chain tensioner with tensioner rail and install tensioner retaining pin as shown (Fig 3).

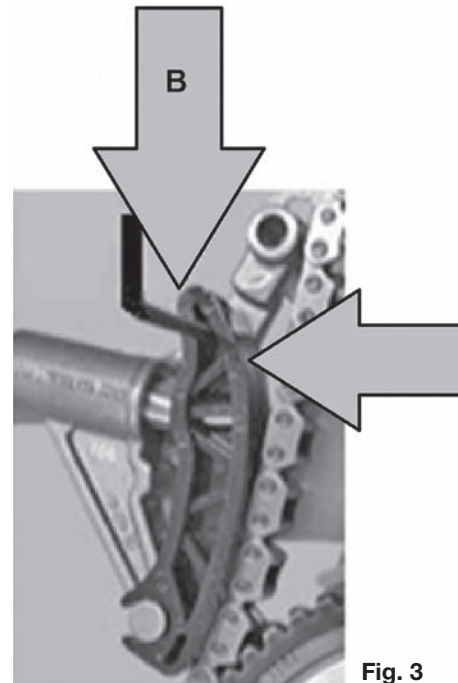


Fig. 3