

Our products are designed to be used correctly and with care for the purpose for which they are intended. No liability is accepted by the Tool Connection for incorrect use of any of our products, and the Tool Connection cannot be held responsible for any damage to personnel, property or equipment when using the tools. Incorrect use will also invalidate the warranty.

If applicable, the applications database and any instructional information provided has been designed to offer general guidance for a particular tool's use and while all attention is given to the accuracy of the data no project should be attempted without referring first to the manufacturer's technical documentation (workshop or instruction manual) or the use of a recognised authority such as Autodata.

It is our policy to continually improve our products and thus we reserve the right to alter specifications and components without prior notice. It is the responsibility of the user to ensure the suitability of the tools and information prior to their use.

7354_Instructions_V1

Guarantee

If this product fails through faulty materials or workmanship, contact our service department direct on: **+44 (0) 1926 818186**. Normal wear and tear are excluded as are consumable items and abuse.



Distributed by The Tool Connection Ltd

Kineton Road, Southam, Warwickshire CV47 0DR
T +44 (0) 1926 815000 F +44 (0) 1926 815888
info@toolconnection.co.uk www.toolconnection.co.uk



LASER[®]

7354
7355

Crows Foot Adaptor 3/8"D & 1/2"D

 **MADE IN
SHEFFIELD**



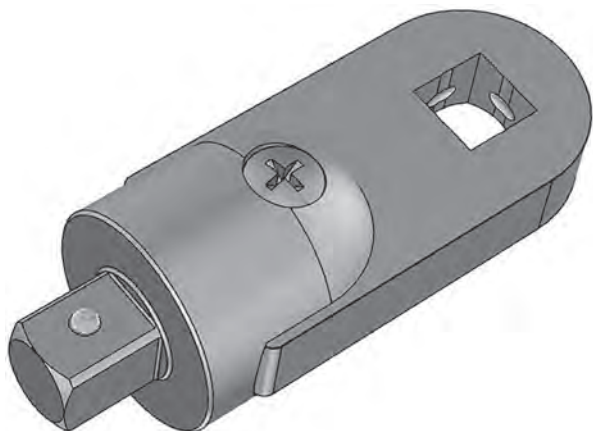
- Designed to allow the new Laser 7164 flexible crows foot wrenches to be used in line with a standard torque wrench or ratchet.
- Ideal for torqueing exhaust gas sensors and general engine sensors such as Lambda, Coolant Temperature, Knock etc.
- Turns standard torque wrenches into spanner type torque wrenches.
- Not for air tool use.
- EU registered design.

www.lasertools.co.uk

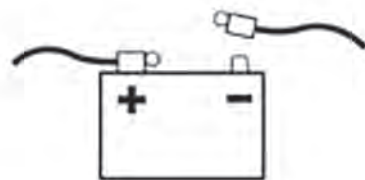
www.lasertools.co.uk

7354 - Crows Foot Adaptor - 1/2"D

7355 - Crows Foot Adaptor - 3/8"D



The following instructions are for guidance only. Please refer to OEM derived data such as the vehicles manufactures own data or Autodata. The use of these tools are purely down to the user's discretion and The Tool Connection Ltd cannot be held responsible for any damage caused what so ever.



Safety Warning - Please Read

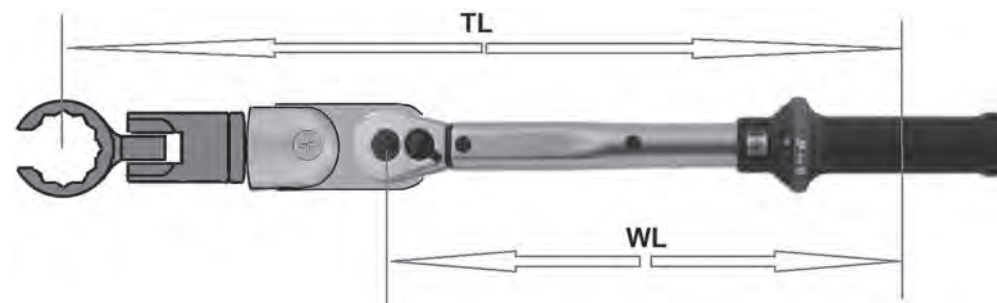
- Personal protection and safety equipment must be used at all times.
- Remove damaged tools from use.
- Store in a dry place when not in use.

Instructions

When using 7354/7355 with a torque wrench particular attention must be paid to the following:

- If using 7354 or 7355 at angle of more than 90° to the torque wrench the following calculation should be used to ensure that the actual torque applied to the fixing is the torque required.

Examples



Nm1 = Torque setting of wrench

Nm2 = Required Torque at Fixing

WL = Wrench Length (to centre of handle)

TL = Total Effective Length

Use: $Nm1 = Nm2 \times WL/TL$

Example: Where Nm2 = 50Nm, WL = 0.3M, TL = 0.4M

$Nm1 = 50 \times 0.3/0.4 = 50 \times 0.75$

$Nm1 = 37.5Nm$

Set wrench to 37.5Nm to achieve 50Nm at the fixing.