

Our products are designed to be used correctly and with care for the purpose for which they are intended. No liability is accepted by the Tool Connection for incorrect use of any of our products, and the Tool Connection cannot be held responsible for any damage to personnel, property or equipment when using the tools. Incorrect use will also invalidate the warranty.

If applicable, the applications database and any instructional information provided has been designed to offer general guidance for a particular tool's use and while all attention is given to the accuracy of the data no project should be attempted without referring first to the manufacturer's technical documentation (workshop or instruction manual) or the use of a recognised authority such as Autodata.

It is our policy to continually improve our products and thus we reserve the right to alter specifications and components without prior notice. It is the responsibility of the user to ensure the suitability of the tools and information prior to their use.

7433_Instructions_V1

Guarantee

If this product fails through faulty materials or workmanship, contact our service department direct on: **+44 (0) 1926 818186**. Normal wear and tear are excluded as are consumable items and abuse.



Distributed by The Tool Connection Ltd

Kineton Road, Southam, Warwickshire CV47 0DR
T +44 (0) 1926 815000 F +44 (0) 1926 815888
info@toolconnection.co.uk www.toolconnection.co.uk

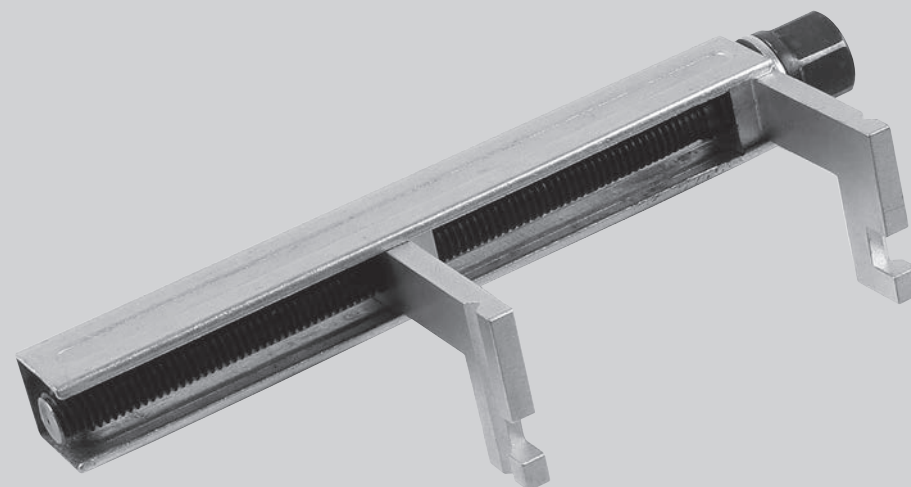


7433

LASER[®]

Drum Brake Shoe Spreading Tool

Min: 25mm to Max:142mm



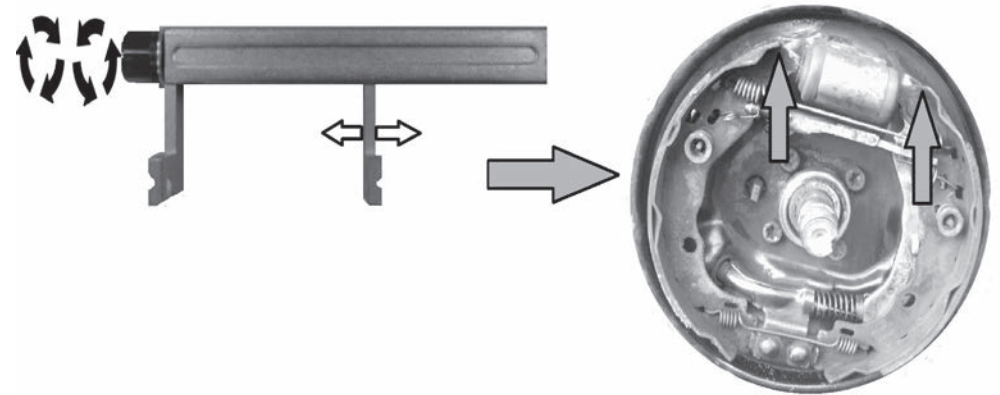
- Brake shoe spreader - from Min: 25mm to Max: 142mm
- Spreads and hold the brake shoes apart allowing removal of the brake cylinder, etc
- Eliminates the need to remove the brake shoes or apply the handbrake.
- 3/8"D and 17mm Hex allowing use of a ratchet or spanner
- Eliminates the need to dismantle the brake shoe assembly leaving hands free to work

7433 - Drum Brake Shoe Spreading Tool

Designed to allow the brake wheel cylinder to be removed without removing the brake shoes or climbing in the car to apply the hand brake. The tool is used to spread the brake shoes and hold them spread while the cylinder is safely removed and a new cylinder fitted.



Instructions for use



The following instructions are for guidance only. Please refer to OEM derived data such as the vehicle's manufacturer's own data or Autodata. The use of this brake shoe spreading tool is purely down to the user's discretion and The Tool Connection Ltd cannot be held responsible for any damage caused whatsoever.

