

Our products are designed to be used correctly and with care for the purpose for which they are intended. No liability is accepted by the Tool Connection for incorrect use of any of our products, and the Tool Connection cannot be held responsible for any damage to personnel, property or equipment when using the tools. Incorrect use will also invalidate the warranty.

If applicable, the applications database and any instructional information provided has been designed to offer general guidance for a particular tool's use and while all attention is given to the accuracy of the data no project should be attempted without referring first to the manufacturer's technical documentation (workshop or instruction manual) or the use of a recognised authority such as Autodata.

It is our policy to continually improve our products and thus we reserve the right to alter specifications and components without prior notice. It is the responsibility of the user to ensure the suitability of the tools and information prior to their use.

7488_Instructions_V1

Guarantee

If this product fails through faulty materials or workmanship, contact our service department direct on: **+44 (0) 1926 818186**. Normal wear and tear are excluded as are consumable items and abuse.



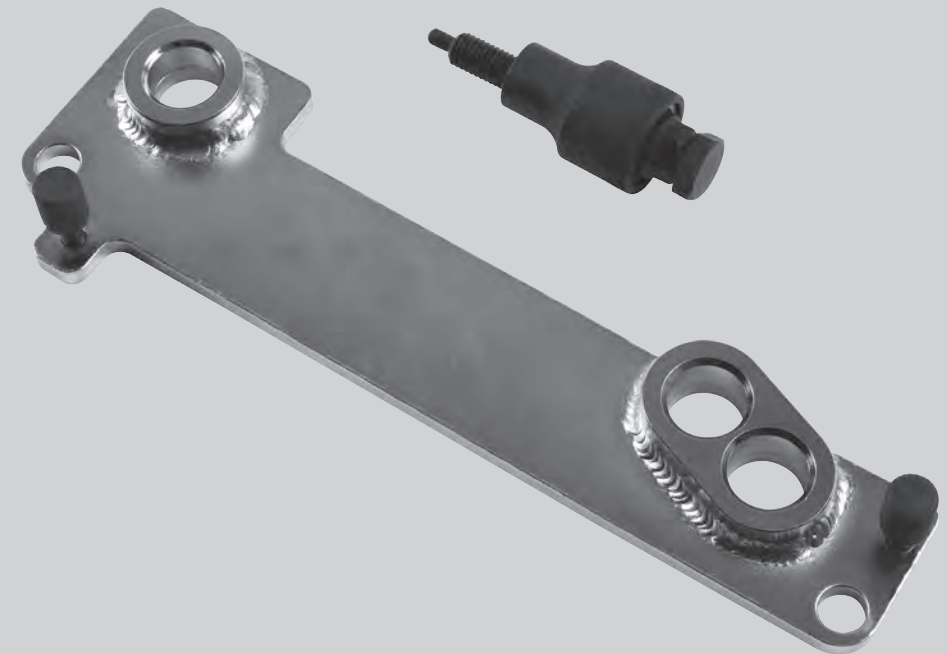
Distributed by The Tool Connection Ltd

Kineton Road, Southam, Warwickshire CV47 0DR
T +44 (0) 1926 815000 F +44 (0) 1926 815888
info@toolconnection.co.uk www.toolconnection.co.uk



LASER®

Timing Chain Guide Rail Pins Remover For Mercedes Benz

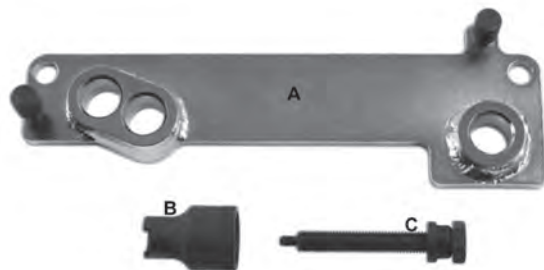


- Applications: A Class, B Class, C Class, E Class, GLA
- Petrol 1.6/2.0 engines from 2011 to 2018
- Engine codes include 270 XXX, 133 XXX, 274 XXX
- Equivalent to OEM 270589013300, 605589003300

7488 - Timing Chain Guide Rail Pins Remover - For Mercedes Benz

The 7488 Timing Chain Guide Rail Pins Remover is designed to extract the timing chain slipper guide on the 1.6 and 2.0lt petrol engines from 2011 onwards. Equivalent to the OEM tools, the 7488 allows removal of the pins that hold the chain guides in place with the minimum of disassembly. Always refer to OEM instructions for correct use.

- Applications: A Class, B Class, C Class, E Class, GLA
- Petrol 1.6/2.0 engines from 2011 to 2018
- Engine codes include 270 XXX, 133 XXX, 274 XXX
- Equivalent to OEM 270589013300, 605589003300



Item	COMP.	OEM No.	Description
A	C901	270 589 013 300	Puller mounting bracket
B	C904	605 589 003 300	Puller Guide
C			Puller force screw and nut assembly

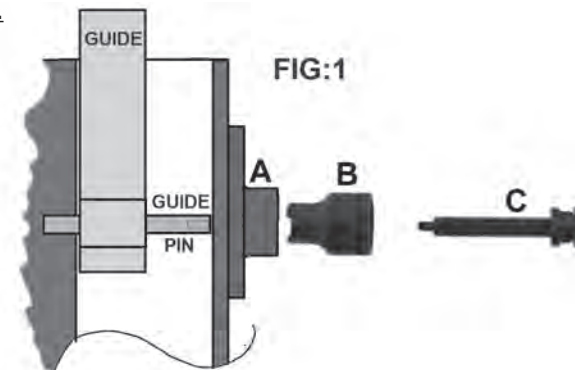
The following instructions are for guidance only. Please refer to OEM derived data such as the vehicles manufactures own data. The use of this engine timing tool kit is purely down to the user's discretion and The Tool Connection Ltd cannot be held responsible for any damage caused what so ever.



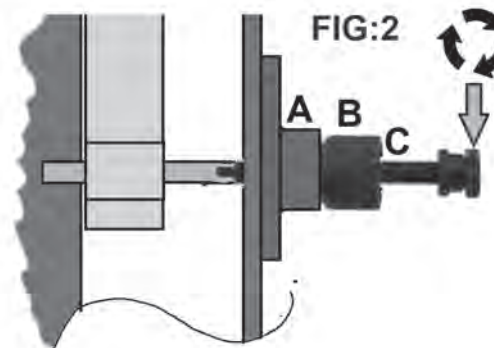
Instructions for use

Assemble the components on the front of the engine so that the puller mounting bosses on the puller mounting bracket (A) align with the appropriate guide pin. see Fig:1.

NOTE: Lubricate force screw and bearing with clean Molybdenum Disulphide grease.



Screw "C" into the guide pin - see Fig:2.



Hold component "C" while turning the force nut to pull out the pin. See Fig: 3

