

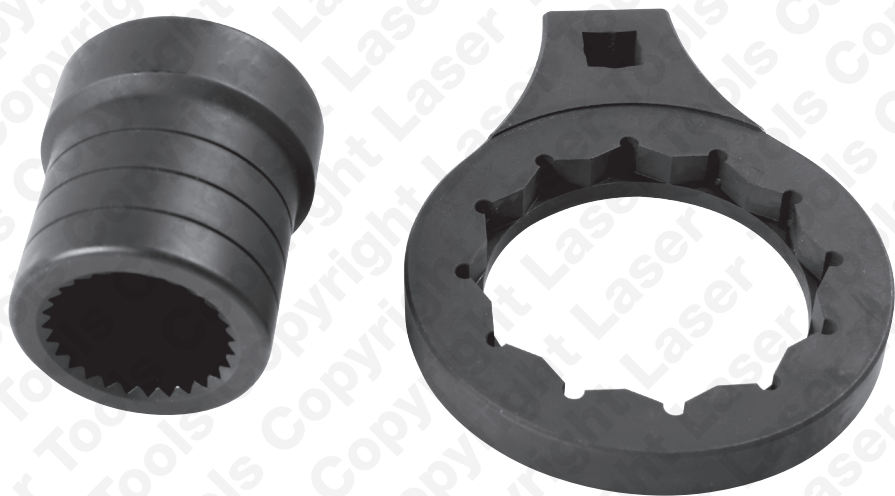
LASER[®]

Part No. 8005

Differential Pinion Holder & Wrench Set

Land Rover

Instructions



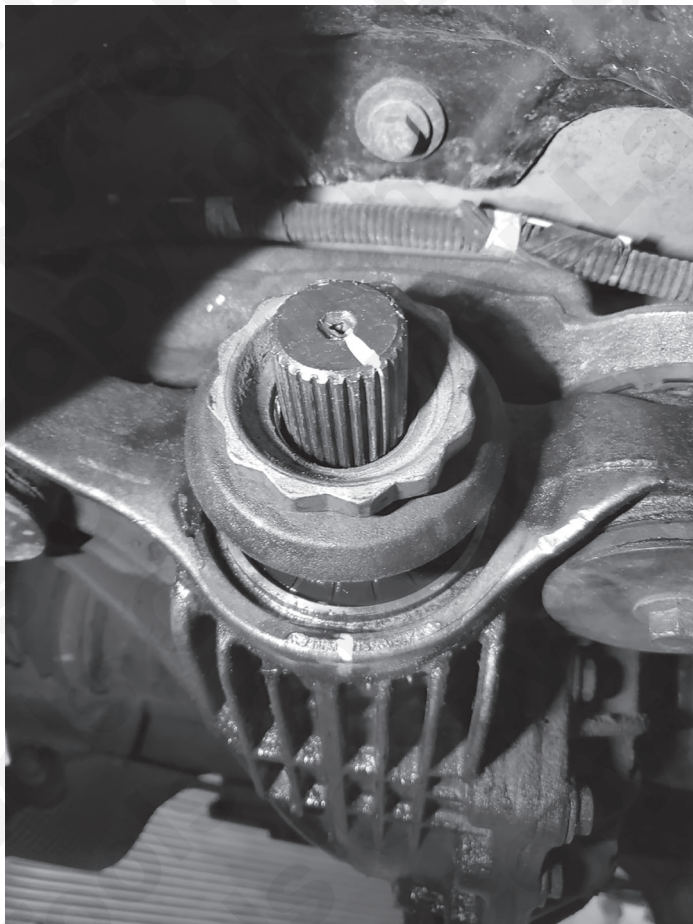
- 1/2"D spline pinion socket with 1/2"D pinion nut wrench.
- Applications include: Range Rover (2013 - 2016) & Range Rover Sport (2014 - 2016).
- Pinion nut wrench also suitable for Discovery (2017 - 2019).
- Pinion nut wrench equivalent to OEM JLR-205-994, JLR-205-996 & BMW 33 5 050, 0 495 552 (note: BMW use a different splined socket - see Laser Part No. 8469).

Refer to OEM instructions for torque setting.

www.lasertools.co.uk

Introduction

A splined socket and 12 point (bi-hex) wrench designed to allow the differential pinion to be held while the pinion nut is removed or tightened.

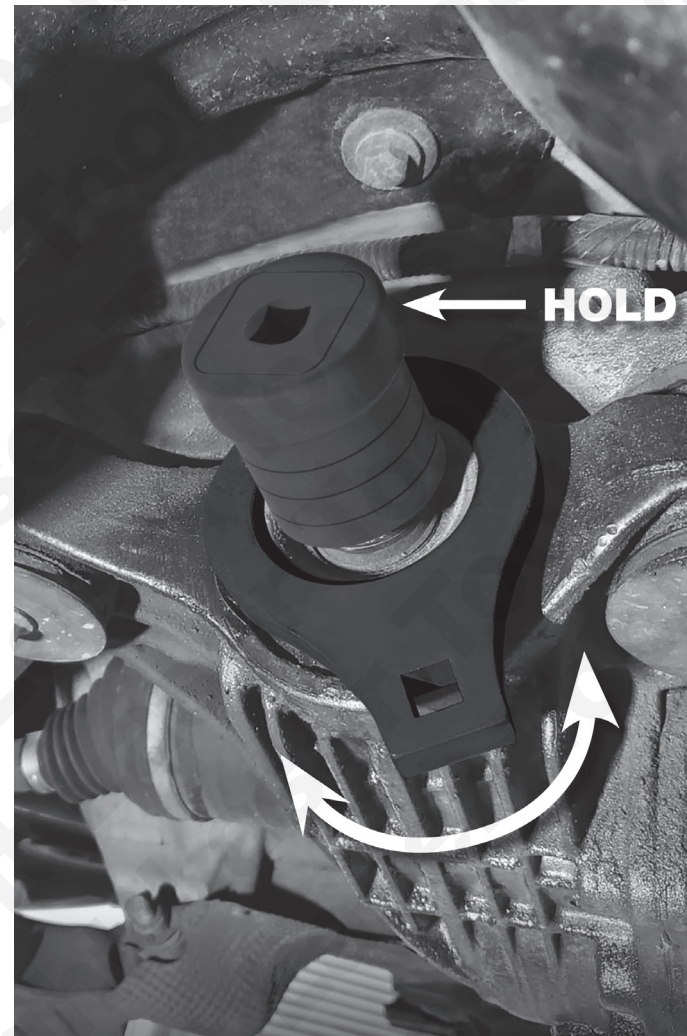


The following instructions are for guidance only. Please refer to OEM derived data such as the vehicle manufacturers' own data or Autodata.

The use of this tool is purely down to the user's discretion and The Tool Connection Ltd. cannot be held responsible for any damage caused what so ever.



Instructions



Our products are designed to be used correctly and with care for the purpose for which they are intended. No liability is accepted by The Tool Connection for incorrect use of any of our products, and the Tool Connection cannot be held responsible for any damage to personnel, property or equipment when using the tools. Incorrect use will also invalidate the warranty.

If applicable, the applications database and any instructional information provided has been designed to offer general guidance for a particular tool's use and while all attention is given to the accuracy of the data no project should be attempted without referring first to the manufacturer's technical documentation (workshop or instruction manual) or the use of a recognised authority such as Autodata.

It is our policy to continually improve our products and thus we reserve the right to alter specifications and components without prior notice. It is the responsibility of the user to ensure the suitability of the tools and information prior to their use.



Safety First. Be Protected.



5 018341 080051 >

8005_Instructions_V5



www.lasertools.co.uk

Guarantee



Distributed by The Tool Connection Ltd
Kineton Road, Southam, Warwickshire CV47 0DR
T +44 (0) 1926 815000 F +44 (0) 1926 815888
info@toolconnection.co.uk www.toolconnection.co.uk

If this product fails through faulty materials or workmanship, contact our service department direct on: **+44 (0) 1926 818186**. Normal wear and tear are excluded as are consumable items and abuse.

www.lasertools.co.uk