

Part No. 8189



LTR Star Nut Setter

Instructions



Step 4: Remove Handle, and unscrew Drive Pin from the star nut.

Our products are designed to be used correctly and with care for the purpose for which they are intended. No liability is accepted by the Tool Connection for incorrect use of any of our products, and the Tool Connection cannot be held responsible for any damage to personnel, property or equipment when using the tools. Incorrect use will also invalidate the warranty.



www.lasertools.co.uk



Distributed by The Tool Connection Ltd
Kington Road, Southam, Warwickshire CV47 5QR
T +44 (0) 1926 815000 F +44 (0) 1926 815888
info@toolconnection.co.uk www.toolconnection.co.uk

Guarantee

If this product fails through faulty materials or workmanship, contact our service department direct on: +44 (0) 1926 818186. Normal wear and tear are excluded as are consumable items and abuse.

www.lasertools.co.uk

Introduction

For the installation of new star nuts into 1" & 1 1/8" threadless fork steerers to the required depth.

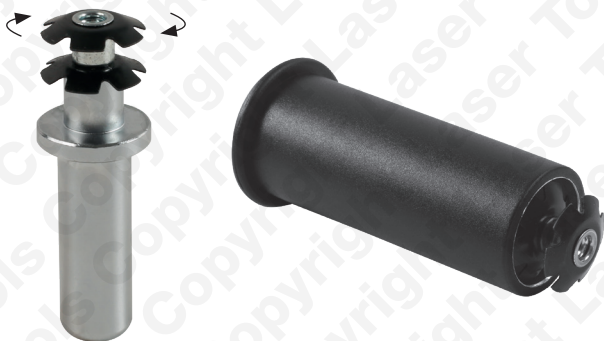
Components

Ref.	Description
A	Handle
B	Drive Pin
C	Collar



www.lasertools.co.uk

Instructions



Step 1: Screw a new star nut fully onto Drive Pin



Step 2: Insert the Drive Pin into the Handle, and place over the fork steerer. Insert the Collar into the handle first if using on 1" diameter steerers.

www.lasertools.co.uk

Instructions



Step 3: Gripping the handle firmly, tap the head of the Driver Pin with a Dead Blow Hammer until it bottoms out.



www.lasertools.co.uk