

# LASER<sup>®</sup>

Part No. 8298

## Rear Crankshaft Installation Kit

for JLR 2.0L Diesel

### Instructions



[www.lasertools.co.uk](http://www.lasertools.co.uk)

## Introduction

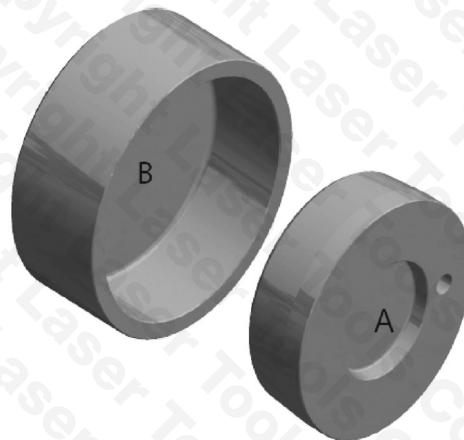
Designed to allow damage free fitting of the rear main crankshaft oil seal on the JLR 2.0 Diesel "Ingenium" engine.

When performing major engine rebuild work on any engine it is easy to damage seals if they are not aligned and guided into place with care. The Laser 8298 kit provides a simple and effective solution to ensure correct alignment and fitting.

- Jaguar applications include: E-Pace (from 2017), F-Pace (2016 - 2020), XE (2015 - 2020), XF (2015 - 2020).
- Land Rover applications include: Discovery (from 2017), Discovery Sport (2015 - 2019), Range Rover Sport (2016 - 2018), Range Rover Velar (from 2017).
- Aluminium construction for use with a soft faced mallet.
- Designed to perform the same task as OEM JLR 303-1674.
- For engine timing see Laser Part No. 7430, for balance shaft replacement see Part No. 8271.
- Designed & manufactured in Sheffield.

The information given here is for reference only. Laser Tools recommends the use of Manufacturer data. Laser Tools cannot be held responsible for damage to the vehicle or personnel whilst using this kit.

## Components



Ref.	Description	OEM Ref.
A	Seal Alignment Boss	JLR-303-1674
B	Seal Insertion Boss	

## Applications

	Make, Model, Year		Engine Codes
Jaguar	E-Pace	From 2017	<b>2.0 D</b>
	F-PACE	2016 - 2020	AJ20/204DT AJ20/204DTA
	XE	2015 - 2020	AJ-200D/204DT
	XF	2015 - 2020	AJ-200D AJ-200D/204DTA
Land Rover	Discovery	From 2017	204DTA
	Discovery Sport	2015 - 2019	AJ200D
	Range Rover Evoque	2015 - 2019	AJ200/204DTD AJ200/204DTA
	Range Rover Sport	2016 - 2018	AJ200D/204DTA
	Range Rover Velar	From 2017	AJ200D/204DTD

## Instructions for use:

- Always refer to manufacturer vehicle specific data and instructions.
- Designed for use with soft face mallet.

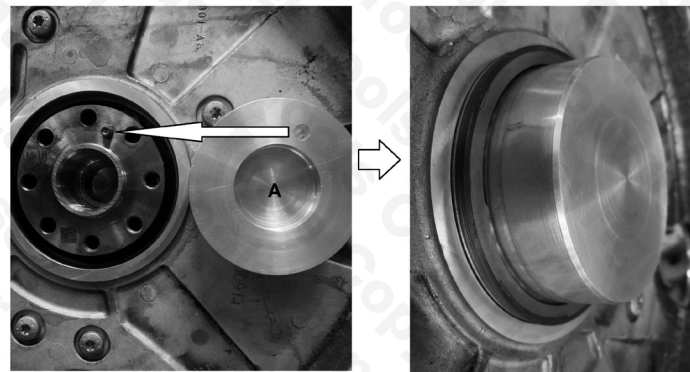


## Instructions

### Insert seal:

- Check the seal area is clean and free of any debris.
- Check the crankshaft end is clean and free of any hard oil residue etc.
- Using a light covering of clean engine oil place the seal on the seal alignment boss (A).
- Place seal alignment boss (A) over the end of the crankshaft ensuring the dowel pin in the crankshaft sits in the recess in the back of component A. See figure 1.

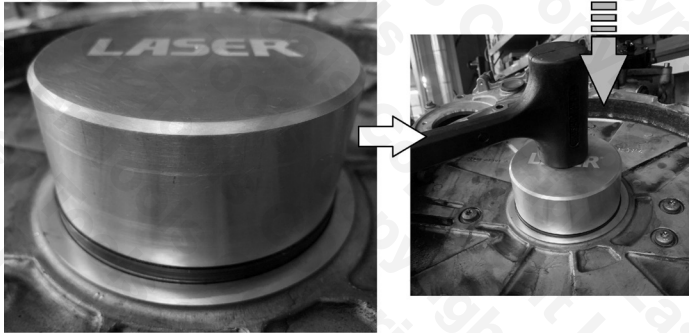
Fig 1



## Instructions

- Using the seal insertion boss (B) push the seal along the seal alignment boss (A) until it starts to seat in the engine casing.
- Using a soft faced mallet knock the seal in to its final position. See figure 2.

Fig 2



## Safety Warnings - please read

- Wear eye and hand protection when using this tool kit.
- Always carefully clean the tool components after each use.
- Keep the tool components safe and tidy.
- Do not use the kit for any purpose other than for which it is designed.



**Safety First.** Be Protected.

Our products are designed to be used correctly and with care for the purpose for which they are intended. No liability is accepted by the Tool Connection for incorrect use of any of our products, and the Tool Connection cannot be held responsible for any damage to personnel, property or equipment when using the tools. Incorrect use will also invalidate the warranty.

If applicable, the applications database and any instructional information provided has been designed to offer general guidance for a particular tool's use and while all attention is given to the accuracy of the data no project should be attempted without referring first to the manufacturer's technical documentation (workshop or instruction manual) or the use of a recognised authority such as Autodata.

It is our policy to continually improve our products and thus we reserve the right to alter specifications and components without prior notice. It is the responsibility of the user to ensure the suitability of the tools and information prior to their use.



8298\_Web\_Instructions\_V1



When you have finished with this book please recycle it

[www.lasertools.co.uk](http://www.lasertools.co.uk)



Distributed by The Tool Connection Ltd

Kretton Road, Southam, Warwickshire CV47 0DR

T +44 (0) 1926 815000 F +44 (0) 1926 815888

[info@toolconnection.co.uk](mailto:info@toolconnection.co.uk) [www.toolconnection.co.uk](http://www.toolconnection.co.uk)

#### Guarantee

If this product fails through faulty materials or workmanship, contact our service department direct on: **+44 (0) 1926 818186**. Normal wear and tear are excluded as are consumable items and abuse.

**[www.lasertools.co.uk](http://www.lasertools.co.uk)**