

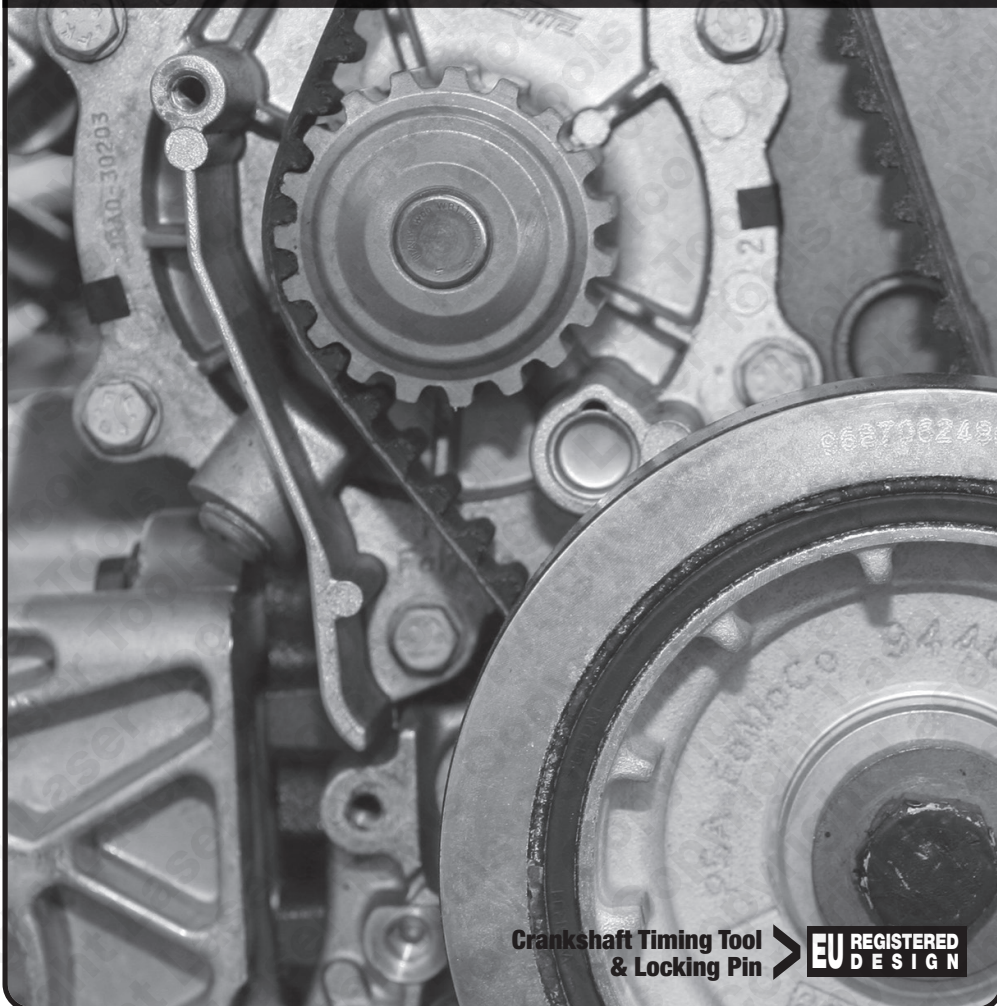
# LASER<sup>®</sup>

Part No. 8362

## Instructions

### Engine Timing Tool Kit

VW Group CR Diesel



Crankshaft Timing Tool  
& Locking Pin



[www.lasertools.co.uk](http://www.lasertools.co.uk)

## Introduction

Developed for the 1.2, 1.4, 1.6 & 2.0 Common Rail Diesel engines found across the VW Group ranges of vehicles. This kit offers the minimum tools required to allow the user to lock these engines in to their “timed” position for the safe removal and replacement of the camshaft drive belt or to perform engine timing checks.

**Note: for pre 2012 engine codes, please see Laser Part No. 5130.**

**For a more comprehensive kit which includes tensioner hex keys and HP fuel pump sprocket holding tool, see Laser Part No. 6809**

- Audi, Seat, Skoda & Volkswagen CR engines from 2012. For complete applications please see over.
- Tools equivalent to OEM: T10492, T10490. Use in conjunction with OEM instruction.
- Crankshaft Timing Tool and Locking Pin (C997) EU Registered Design.
- Made in Sheffield.

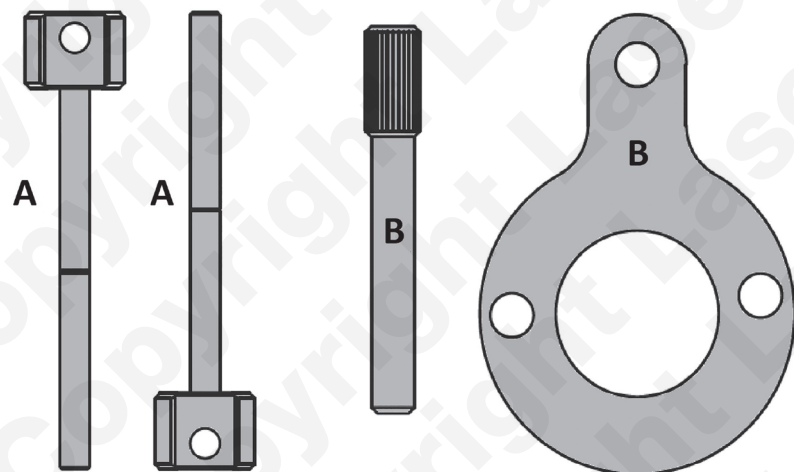
## Applications

Manufacturer	Model	Year	Engine Codes			
Audi	A1/A1 Sportback	2015 - 2018	1.2 TDI CR	CNFA	CXHA	DFLD
	A3/Sportsback/Cabrio	2012 - 2020	CFWA *	CNFB	CXHB	DFMA
	A4	2013 - on	1.4 TDI CR	CNHA	CYKA	DFSA
	A5	2013 - on	CUSA	CNHC	CYKB	DFSB
	A6	2013 - on	CUSB	CRBC	CYKC	DFSC
	A7	2018 - on	CUTA	CRBD	CZJA	DFSD
	Q2	2016 - 2020	1.6 TDI CR	CRFA	DASA	DFSE
	Q3	2015 - on	CAYC *	CRFC	DASB	DFSF
	Q5	2013 - 2020	CAYD *	CRLB	DAUA	DFTA
	TT	2014 - 2018	CAYE *	CRLC	DAUB	DFTB
Seat	Alhambra	2015 - on	CLHA	CRLD	DAVA	DFTC
	Arona	2017 - on	CLHB	CRMB	DAWA	DFUA
	Ateca	2016 - 2020	CLHC	CRUA	DAWB	DGCA
	Ibiza	2015 - on	CRKA	CRVA	DBGA	DJGA
	Leon/ST	2012 - 2020	CRKB	CRVC	DBGB	DLTA
	Tarraco	2019 - on	CXMA	CSHA	DBGC	DLTC
	Toledo	2015 - 2018	CXXA	CSLA *	DCYA	DLUB
	Fabia III	2014 - 2018	CXXB	CSLB *	DCYB	DTRD
	Kamiq	2019 - on	DBKA	CSLC *	DDAA	DTTA
	Karoq	2017 - on	DCXA	CSNA *	DDCA	DTTC
Skoda	Kodiaq	2017 - on	DCZA	CSUA	DDCB	
	Octavia III	2013 - 2020	DDYA	CSUB	DDDA	
	Rapid/Spaceback	2015 - 2018	DDYB	CSUD	DEJA	
	Scala	2019 - on	DGDA	CSUE	DEJB	
	Superb III	2015 - on	DGDB	CUAA	DESA	
	Yeti/Outdoor	2013 - 2017	DGTA	CUNA	DETA	
	Amarok	2010 - 2016	DGTC	CUPA	DETB	
	Arteon	2017 - 2020	DGTD	CUUA	DEUA	
	Beetle	2011 - 2018	DGTE	CUUB	DEUB	
	Caddy/Caddy Maxi	2015 - 2021	2.0 TDI CR	CUUC	DEUC	
Volkswagen	CC	2015 - 2017	CDBA	CUUD	DEZB	
	Crafter	2017 - on	CDCA	CUUE	DEZD	
	Golf VII	2012 - 2020	CFHC *	CUUF	DEZE	
	Golf SV/Sportsvan	2014 - on	CFHE *	CUVA	DEZF	
	Jetta	2014 - 2018	CFHF *	CUVB	DFBA	
	Passat/Alltrack	2014 - on	CFJA *	CUVC	DFCA	
	Polo	2014 - on	CKFB	CUVD	DFEA	
	Scirocco	2014 - 2018	CKFC	CUVE	DFEB	
	Sharan	2015 - on	CKTB *	CUWA	DFFA	
	T-Cross	2019 - on	CKTC *	CXEB	DFGA	
	T-Roc	2017 - on	CKUB *	CXEC	DFGB	
	Tiguan	2015 - on	CKUC *	CXFA	DFGC	
	Touran	2015 - on	CLCA *	CXGA	DFHA	
	Transporter T6	2015 - on	CNEA	CXGB	DFLA	

\*For engines without crankshaft sprocket timing mark.

Always refer to the website for most up to date applications: [www.lasertools.co.uk/product/8362](http://www.lasertools.co.uk/product/8362)

# Components

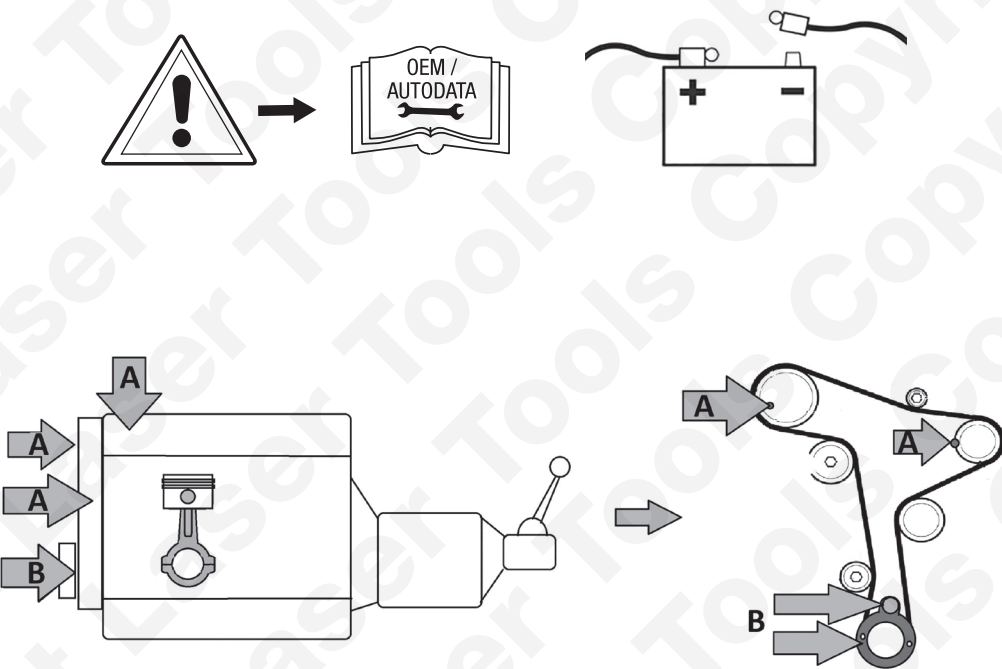


Ref.	Comp. Code	OEM Ref.	Description
A	C768	T10492	Fuel Pump Locking & Camshaft Alignment Pins x2
B	C997	T10490	Crankshaft Timing Tool

# Instructions

The following instructions are for guidance only. Please refer to OEM derived data such as the vehicle manufacturers' own data or Autodata.

The use of this engine timing tool kit is purely down to the user's discretion and The Tool Connection Ltd. cannot be held responsible for any damage caused whatsoever.

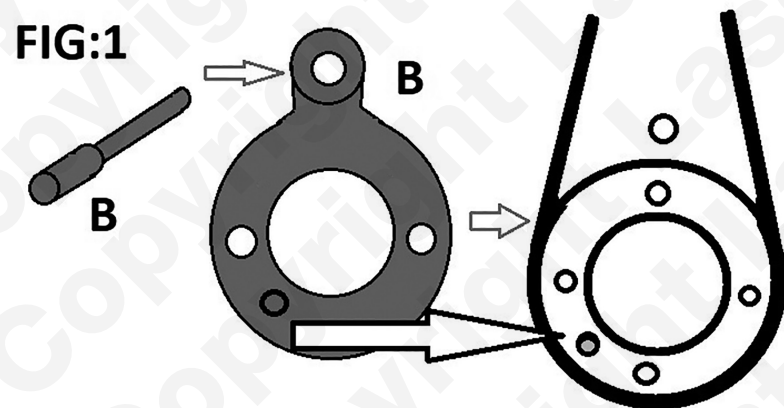


**Note:** Use a suitable pin to lock the auxiliary belt tensioner in its fully retracted position.

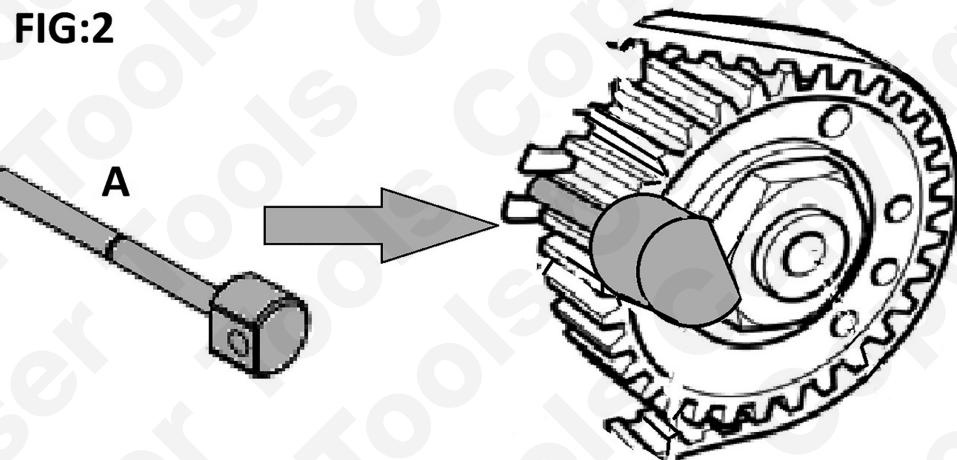


## Introduction

Align the timing marks according to the manufacturers' instructions and fit the crankshaft alignment tool (B) as shown in figure 1. Ensure the "pip" on the crankshaft aligns with the hole in the tool.



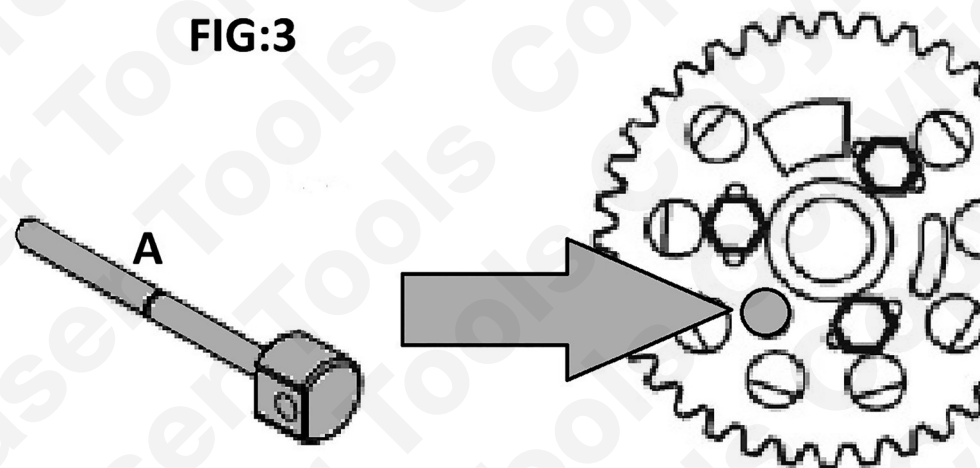
Set the fuel pump sprocket position using one of A as shown in figure 2.



## Instructions

Set the rear camshaft position using component A to lock the camshaft sprocket as shown in figure 3.

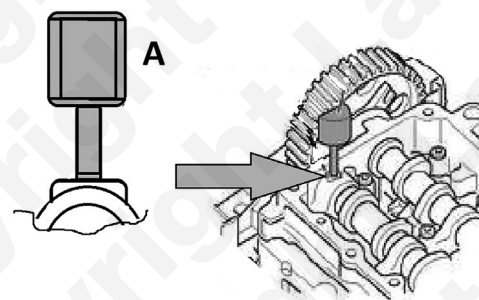
**FIG:3**



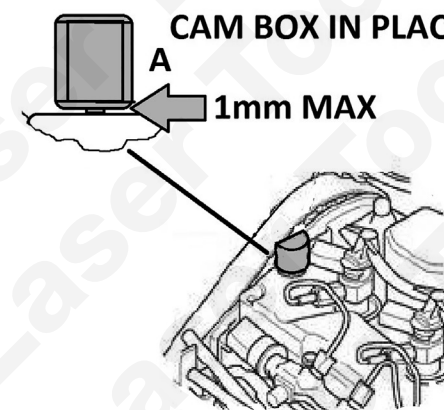
Set the front camshaft position from the top of the engine as shown using component D. This can be done with the cam cover in place or removed, see figure 4.

**FIG:4**

**CAM BOX REMOVED**



**CAM BOX IN PLACE**



## Safety Warnings - please read

- If the engine has been identified as an Interference engine, damage to the engine will occur if the timing belt has been damaged. A compression check of all the cylinders should be taken before the cylinder head(s) are removed.
- Do not turn crankshaft or camshaft when the timing belt/chain has been removed.
- To make turning the engine easier, remove the spark plugs/glow plugs or injectors.
- Observe all tightening torques.
- Do not turn the engine using the camshaft or any other sprocket.
- Disconnect the battery earth lead (check Radio code is available).
- Do not use cleaning fluids on belts, sprockets or rollers.
- Some toothed timing belts are not interchangeable. Check the replacement belt has the correct tooth profile.
- Always mark the belt with the direction of running before removal.
- Do not lever or force the belt onto its sprockets.
- Do not use timing pins to lock the engine when slackening or tightening the crankshaft pulley bolts.
- ALWAYS REFER TO A REPUTABLE MANUFACTURERS WORKSHOP MANUAL.

Our products are designed to be used correctly and with care for the purpose for which they are intended. No liability is accepted by the Tool Connection for incorrect use of any of our products, and the Tool Connection cannot be held responsible for any damage to personnel, property or equipment when using the tools. Incorrect use will also invalidate the warranty.

If applicable, the applications database and any instructional information provided has been designed to offer general guidance for a particular tool's use and while all attention is given to the accuracy of the data no project should be attempted without referring first to the manufacturer's technical documentation (workshop or instruction manual) or the use of a recognised authority such as Autodata.

It is our policy to continually improve our products and thus we reserve the right to alter specifications and components without prior notice. It is the responsibility of the user to ensure the suitability of the tools and information prior to their use.



5 018341 083625 >

8362\_Instructions\_V1



When you have finished with this toolset please recycle it

[www.lasertools.co.uk](http://www.lasertools.co.uk)



Distributed by The Tool Connection Ltd

Kington Road, Southam, Warwickshire CV47 0DR  
T +44 (0) 1926 815000 F +44 (0) 1926 815888  
[info@toolconnection.co.uk](mailto:info@toolconnection.co.uk) [www.toolconnection.co.uk](http://www.toolconnection.co.uk)

### Guarantee

If this product fails through faulty materials or workmanship, contact our service department direct on: **+44 (0) 1926 818186**. Normal wear and tear are excluded as are consumable items and abuse.

[www.lasertools.co.uk](http://www.lasertools.co.uk)