

Part No. 8870

# LASER<sup>®</sup>

## **Camshaft Locking Tool**

– Citroën, Peugeot, Opel 1.2L

Wet Belt Petrol

### **Instructions**



<sup>®</sup>MADE IN  
SHEFFIELD

[www.lasertools.co.uk](http://www.lasertools.co.uk)

## Introduction

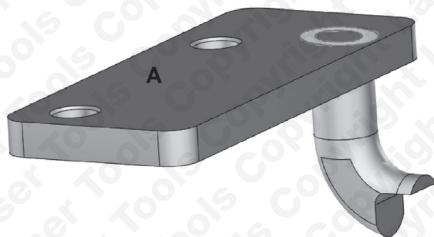
The 8870 has been developed for the late model EB2 engines where the camshafts alignment features can be accessed through the top by removing the plastic cam cover and the vacuum pump on the vehicles listed above. The 8870 is designed to enhance the alignment of the Exhaust camshaft on these engines.

Use with Laser 8352 or 8570.

**NOTE: For engine Identification see application list attached and refer to figure 1.**

- Citroën Applications: Berlingo (from 2018), C3 Aircross (from 2016), C4 Cactus (from 2014), C5 Aircross (from 2019), C-Elysee (2018 to 2020), DS4 (2014 to 2019), DS 3 (from 2016), DS 7 (from 2018).
- Peugeot Applications: 208 (from 2014), 308 (from 2014), 508 (from 2019), 2008 (from 2013), 3008 (from 2014), 5008 (From 2014), Partner (from 2014), Rifter (from 2018).
- Vauxhall, Opel applications: Combo-E (from 2018), Corsa-F (from 2019), Crossland X (from 2017), Grandland X (2017 to 2018).
- Designed for engines with Split plastic cam cover giving better alignment of the Exhaust camshaft.
- Use in accordance with OEM instructions.

**The information given below is for reference only. Laser Tools recommends the use of Manufacturer data. Laser Tools cannot be held responsible for damage to engine or personnel whilst using this tool kit.**



Item	Laser Code	Description	OEM No.
A	C1066	Camshaft Alignment Tool	0109-2E

## Applications

Make	Model	Year
Citroën	Berlingo IV	From 2018
	C3 Aircross	From 2016
	C4 Cactus	From 2014
	C5 Aircross	From 2019
	C-Elysee	2018 to 2020
	DS4	2014 to 2019
DS	3	From 2016
	7	From 2018
Vauxhall /Opel	Combo-E	From 2018
	Corsa-F	From 2019
	Crossland X	From 2017
	Grandland X	2017 to 2018

<b>Make</b>	<b>Model</b>	<b>Year</b>
<b>Peugeot</b>	208	From 2014
	308	From 2014
	508	From 2019
	2008	From 2013
	3008	From 2014
	5008	From 2014
	Partner	From 2014
	Rifter	From 2018

## Engine Codes

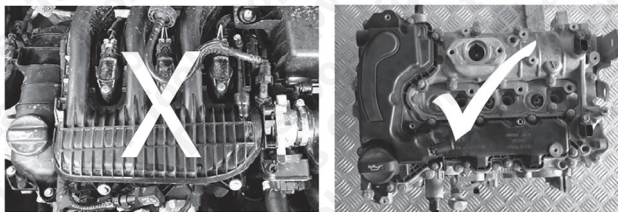
### 1.2

(EB2ADT)	HNS (EB2ADTS)
(EB2ADTS)	HNV (EB2DT)
EB2ADT (HNK)	HNV (EB2DTM)
EB2ADT (HNP)	HNW (EB2DTSM)
EB2ADTD	HNX (EB2DT)
EB2ADTD (HNK)	HNX (EB2DTSD)
EB2ADTS	HNY (EB2DTS)
EB2ADTS (HNS)	HNZ (EB2DT)
EB2ADTX (HNN)	LEG/EB2ADTS
EB2DT (HNZ)	LEG/EB2DTS
EB2DTM (HNV)	LES/B12XHT (EB2DTS)
EB2DTS (HNW)	LES/D12XHL (HNP/EB2ADT)
EB2DTS (HNY)	LES/D12XHT (EB2ADTS)
EB2DTSM (HNW)	LES/EB2ADT
HMM (EB2FAD)	LES/EB2DT
HMU (EB2FD)	LES/F12XHT (HNS/EB2ADTS)
HNK (EB2ADTD)	LEZ/EB2F
HNN (EB2ADTX)	LEZ/EB2FA
HNP (EB2ADT)	



**NOTE:** The later EB2 engines are recognisable by the top view of the engine as shown in Figure 1 below.

**FIG: 1**



### **Instructions for use:**

- Use with Laser 8352 or 8570.
- Always refer to manufacturer specific data and instructions.
- Support the engine from underneath where removal of an engine mounting is required.
- Gain access to the inlet camshaft by removing the plastic cam cover only.

### **Component A – Camshaft Alignment Tool**

**WARNING:** Alignment tools are for setting and holding components in their timed position and should never be used to hold a component while loosening or tightening pulley mounting bolts.

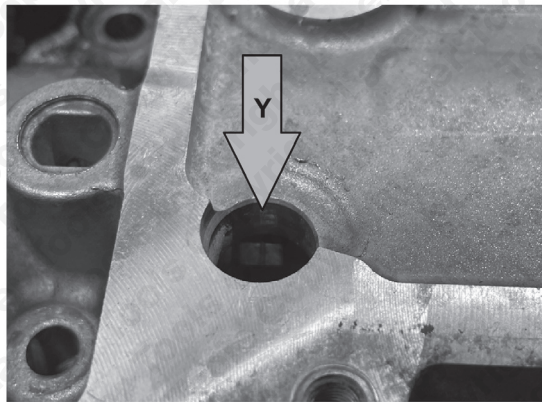
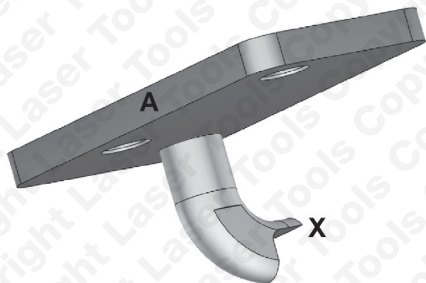
**Note:** Fit the appropriate alignment tools from either 8352 or 8570 before fitting 8870 component (A).

### **Camshaft alignment tool – component (A):**

Component A is inserted into the top of the cam cover box and located on the top corner of the square on the exhaust camshaft as shown in Figure 1.

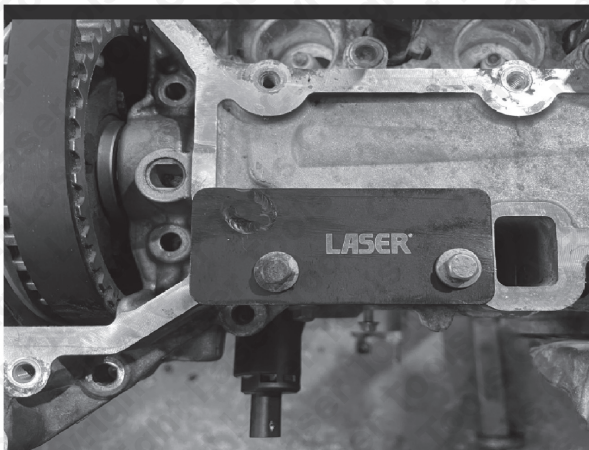
Ensure that the finger (X) engages properly with the corner on the square on the camshaft (Y).

**FIG: 1**



Bolt down using 2 cover bolts as shown in figure 2.

**FIG: 2**



## Safety Warnings - please read

- Wear eye and hand protection when using this tool kit. Be aware of the dangers of metal swarf and cuttings.
- Always carefully clean the tool components after each use, ensuring that there are no traces of metal swarf or cutting lubricant.
- Keep the tool components safe and tidy in the supplied case.
- Do not use the kit for any purpose other than for which it is designed.



**Safety First. Be Protected.**

Our products are designed to be used correctly and with care for the purpose for which they are intended. No liability is accepted by the Tool Connection for incorrect use of any of our products, and the Tool Connection cannot be held responsible for any damage to personnel, property or equipment when using the tools. Incorrect use will also invalidate the warranty.

If applicable, the applications database and any instructional information provided has been designed to offer general guidance for a particular tool's use and while all attention is given to the accuracy of the data no project should be attempted without referring first to the manufacturer's technical documentation (workshop or instruction manual) or the use of a recognised authority such as Autodata.

It is our policy to continually improve our products and thus we reserve the right to alter specifications and components without prior notice. It is the responsibility of the user to ensure the suitability of the tools and information prior to their use.



5 018341 088705 >

8870\_Instructions\_V1



[www.lasertools.co.uk](http://www.lasertools.co.uk)



Distributed by The Tool Connection Ltd  
Kington Road, Southam, Warwickshire CV47 0DR  
T +44 (0) 1926 815000 F +44 (0) 1926 815888  
[info@toolconnection.co.uk](mailto:info@toolconnection.co.uk) [www.toolconnection.co.uk](http://www.toolconnection.co.uk)

### Guarantee

If this product fails through faulty materials or workmanship, contact our service department direct on: +44 (0) 1926 818186. Normal wear and tear are excluded as are consumable items and abuse.

**[www.lasertools.co.uk](http://www.lasertools.co.uk)**